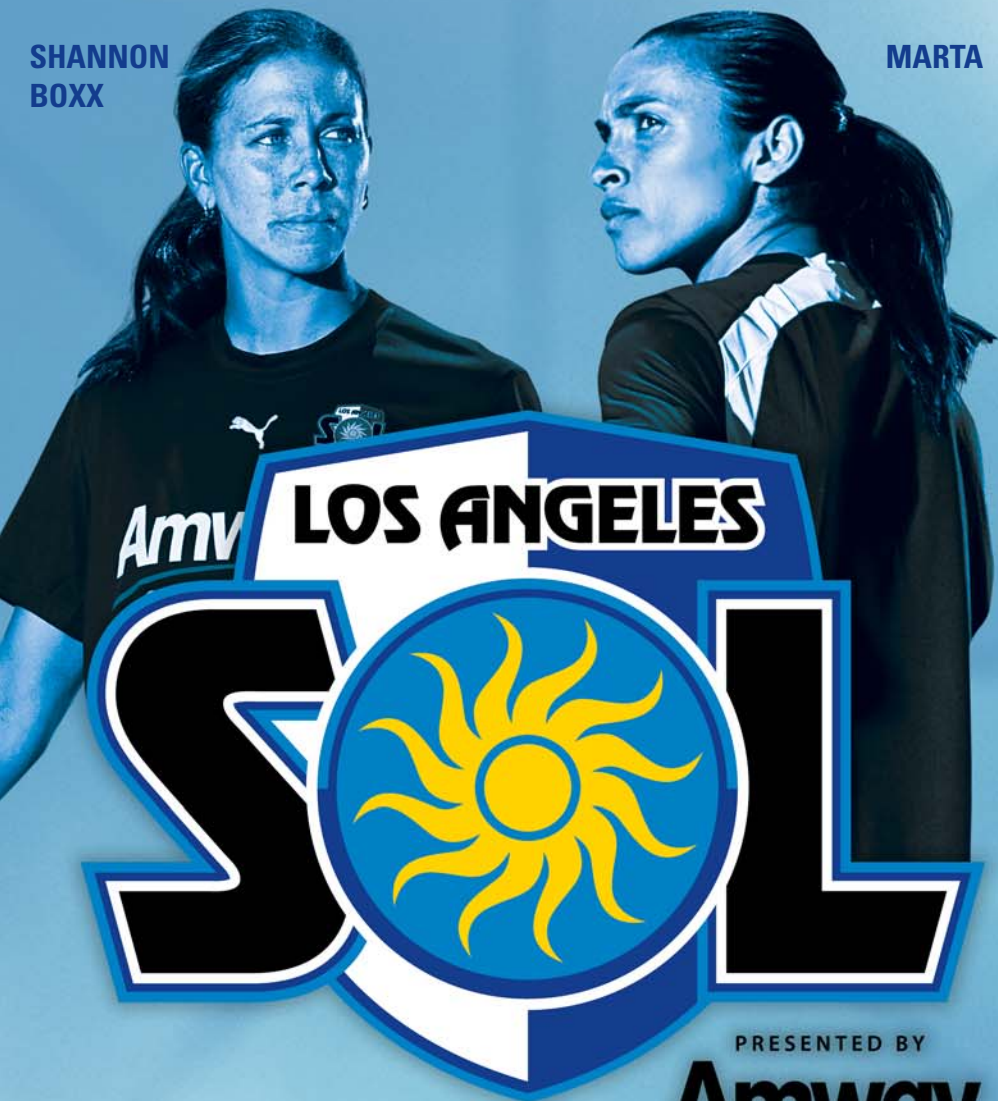


SHANNON
BOXX

MARTA



LOS ANGELES



PRESENTED BY

Amway
GLOBAL

2009 MEDIA GUIDE



LOS ANGELES SOL 2009 SCHEDULE

| DATE | TEAM | TIME (PT) | TV |
|--------------------|-------------------------|-----------|-----|
| Sunday, March 29 | Washington Freedom | 3:00 PM | FSC |
| Sunday, April 5 | @ Sky Blue FC (NJ/NY) | 1:00 PM | |
| Sunday, April 19 | FC Gold Pride | 1:00 PM | |
| Saturday, April 25 | @ Saint Louis Athletica | 1:00 PM | |
| Saturday, May 2 | @ Boston Breakers | 4:00 PM | |
| Sunday, May 10 | Boston Breakers | 1:00 PM | |
| Friday, May 15 | Sky Blue FC (NJ/NY) | 7:30 PM | |
| Sunday, May 24 | @ FC Gold Pride | 4:00 PM | FSC |
| Saturday, May 30 | Saint Louis Athletica | 4:00 PM | |
| Wednesday, June 3 | Chicago Red Stars | 7:30 PM | |
| Sunday, June 7 | Washington Freedom | 3:00 PM | FSC |
| Saturday, June 13 | @ Sky Blue FC (NJ/NY) | 4:00 PM | |
| Sunday, June 21 | FC Gold Pride | 3:00 PM | FSC |
| Wednesday, June 24 | @ Saint Louis Athletica | 5:00 PM | |
| Saturday, June 27 | Chicago Red Stars | 12:00 PM | |
| Sunday, July 5 | @ Washington Freedom | 3:00 PM | FSC |
| Wednesday, July 8 | Saint Louis Athletica | 12:00 PM | |
| Thursday, July 23 | @ FC Gold Pride | TBD | |
| Sunday, August 2 | @ Chicago Red Stars | 3:00 PM | FSC |
| Sunday, August 9 | @ Boston Breakers | 1:00 PM | |

Subject to change // all kick-off times listed in PT// Fox Soccer Channel (FSC)



Table of Contents



THE CLUB

| | |
|---|---|
| Staff Directory | 2 |
| Media Access | 3 |
| Team Overview/Key Dates | 4 |
| Blue Star, LLC | 5 |
| AEG | 6 |
| Charlie Naimo, General Manager | 7 |
| Abner Rogers, Head Coach | 8 |
| Hubert Busby, Jr. and Neil Powell, Coaching Staff | 9 |

THE STADIUM

| | |
|-----------------------------|-------|
| The Home Depot Center | 11-14 |
|-----------------------------|-------|

THE PLAYERS

| | |
|------------------------------------|-------|
| 2009 Los Angeles Sol Roster | 15 |
| 2009 Los Angeles Sol Players | 16-28 |

THE OPPONENTS

| | |
|-----------------------------|-------|
| Boston Breakers | 30-32 |
| Chicago Red Stars | 34-36 |
| FC Gold Pride | 38-40 |
| Sky Blue FC | 42-44 |
| Saint Louis Athletica | 46-48 |
| Washington Freedom | 50-52 |

THE LEAGUE

| | |
|------------------------------------|-------|
| WPS Information | 54-55 |
| WPS Timeline | 56-57 |
| WPS Executive Staff | 58-59 |
| 2009 Regular Season Schedule | 60-61 |
| FOX Soccer Channel Schedule | 62 |
| Post-Season Format | 63 |
| WPS Rules | 64-66 |
| WPS Referees | 67 |
| WPS Camps | 68 |

MEDIA INFORMATION

| | |
|---------------------------------|-------|
| Credentials/Parking | 69 |
| Press Box/Wireless Access | 70 |
| Game Procedures | 71-72 |

© 2009 Los Angeles Sol. All information in this media guide current as of March 27, 2009.
Photography by ISI Photos & Robert Mora Photography



Staff Directory

TEAM OFFICIALS

Ownership Group Blue Star, LLC & AEG
 Blue Star, LLC Shane Astani, Rudi Bianchi, Anthony LaPaglia, Ali Mansouri
 President and CEO, AEG Timothy J. Leiweke
 President, AEG Sports Andrew Messick
 Vice President, AEG Sports Scott Hanley
 Vice President, Communications Michael Roth
 General Manager Charlie Naimo

ADMINISTRATIVE STAFF

Director of Business Operations Sheri Kamakani
 Marketing Shelby Russell, Natalia Diaz, Richard Gutierrez
 Media Relations Nick Ammazalorso, Mike Iwamasa, Erin Lopez
 Corporate Partnerships Amy Ziskin, Stephanie Hillon, Alison Morse
 Corporate Sales John Greene, Vanessa Shay
 Vice President, Sales Matt Rosenfeld
 Director of Ticket Sales Alvin Chang
 Ticket Sales Manager Chris Bain
 Account Executives Stephanie Rose, Brandon Koller
 Ticket Operations Travis Whiteley
 Web Content Christopher Higginson, Andrew Lim
 Stadium Operations Coordinator Kellen Vigil
 Game Entertainment Ben Salisbury

TEAM STAFF

Head Coach Abner Rogers
 Assistant Coach Neil Powell
 Assistant Coach Hubert Busby, Jr.
 Head Athletic Trainer Chris Phillips
 Team Physician Santa Monica Orthopedic/Sports Medicine Group,
 Dr. Bert Mandelbaum
 Director of Soccer Operations Kenzo Bergeron
 Soccer Operations Manager Tracy Corbin

Media Access



On behalf of the Los Angeles Sol, welcome to the 2009 Women's Professional Soccer Season.

As we enter our first season, we hope to make your job of covering the Los Angeles Sol as easy and pleasant as possible. In order to help our operations run smoothly, we ask that you follow these media guidelines.

MEDIA RELATIONS CONTACT INFO

Nick Ammazalorso

Director of Media Relations
 562.546.6011 (ofc) • 310.318.4566 (cell)
 nammazalorso@leaderenterprises.com

Mike Iwamasa

Los Angeles Sol Media Relations
 562.546.6015 (ofc) • 415.412.9505 (cell)
 miwamasa@leaderenterprises.com

Erin Lopez

Los Angeles Sol Media Relations
 714.742.8316 (cell)
 elopez@leaderenterprises.com

Michael Roth

Vice President, Communications
 213.742.7155
 mroth@aegworldwide.com

For daily updates on training, media availability and other information please call 310.630.4003

ADDRESS/ CONTACT INFORMATION

Los Angeles Sol
 c/o AEG Sports
 800 W. Olympic Ave, Suite 305
 Los Angeles, CA 90015

PRACTICE FACILITY/ ADDRESS

The Home Depot Center
 18400 Avalon Blvd.
 Carson, CA 90746

DURING THE WEEK TRAINING ACCESS

During the regular season, training sessions typically run two hours and usually begin at 10:00 a.m. Training times can and frequently do vary. Members of the media who intend to cover training sessions should call the Los Angeles Sol Media Relations Department to obtain the latest training schedule information and confirm their attendance. No media members are allowed into the locker room before, during or after training sessions.

INTERVIEWS

Interviews that need advance preparations or special accommodations by a Los Angeles Sol player or staff member should be made by calling or e-mailing the Los Angeles Sol Media Relations Department at one of the above phone numbers.

The Club

The Club



Team Overview/Key Dates

Why Sol? Sol is the Latin translation for the modern word for "sun" in Spanish, Portuguese, Catalan, Icelandic, Danish, Norwegian and Swedish. Los Angeles is renowned for its sunny climate and rich heritage. By naming the team the Sol, both the cultural tradition and the history of Los Angeles are honored.

IMPORTANT DATES IN LOS ANGELES SOL HISTORY

February 27, 2007 – Women's Soccer Initiative Inc. CEO Tonya Antonucci announces that AEG; John Hendricks of Freedom Soccer LLC; Jeff Cooper of St. Louis United Soccer LLC; Soccer Initiative, LLC; Jack Hanks and Brent Coralli of the Dallas Franchise Group and WGLSI, LLC have signed letters of intent to become charter members of the new women's professional league.

September 4, 2007 – WSII announced that Los Angeles would be one of seven teams in the 2009 Inaugural Season. The team will be owned by AEG and Blue Star, LLC.

January 17, 2008 – WSII announced that its league would be known as Women's Professional Soccer and unveiled the WPS Logo.

September 15, 2008 – Los Angeles names Abner Rogers its first-ever head coach.

September 16, 2008 – Los Angeles is allocated three U.S. Women's National Team players: Shannon Boxx, Stephanie Cox and Aly Wagner.

September 24, 2008 – Los Angeles selects four players in the first-ever WPS International Draft, including Brazilian superstar Marta, Aya Miyama from Japan, Han Duan from China, and Margret Lara Vidarsdottir from Iceland.

October 3, 2008 – Los Angeles names Charlie Naimo its first-ever general manager.

October 6, 2008: The WPS General Draft is conducted, consisting of four rounds of selections of international and domestic players for all seven WPS teams.

October 25, 2008 – The Los Angeles announces that it will be known as the Los Angeles Sol and unveils its logo.

January 12, 2009 – On the same day that she captures her third consecutive FIFA World Player of the Year award, Marta announces that she is joining the Los Angeles Sol.

January 16, 2009 – Los Angeles Sol selects ten players in the 2009 WPS Draft, held in St. Louis in conjunction with the annual NSCAA Coaches Convention.

March 2, 2009 – Los Angeles Sol opens its first-ever preseason training camp at The Home Depot Center.

March 29, 2009 – In the WPS Inaugural Match, the Los Angeles Sol host the Washington Freedom at The Home Depot Center.

Blue Star, LLC.



Blue Star, LLC. is a group comprised of four individuals who share a passion for the beautiful game of soccer, Ali Mansouri, Shane Astani, Rudi Bianchi and Anthony LaPaglia. Their desire to elevate and create a sustainable women's league in this county is unparalleled and their success in soccer is unmatched.

Ali Mansouri, President and Executive Director of the Los Angeles Blues Soccer Club, Inc., has successfully promoted soccer tournaments at The Home Depot Center, The San Bernardino Soccer Complex, UCLA and UC Irvine. In 2008, Mansouri acquired the rights to the Pali Blues Soccer Club, which finished the W-League season with a perfect record on their way to capturing the W-League Championship. He currently resides in the Pacific Palisades with his wife Maryam.

Anthony LaPaglia is an Australian actor, best known for his Golden Globe Award winning role as FBI agent Jack Malone on the TV series, Without a Trace. In the 1980's LaPaglia was a goalkeeper in the National Soccer League, playing for Adelaide City and West Adelaide. LaPaglia is now part owner of the A-League club Sydney FC and attends their matches regularly. He was the narrator and executive producer of the Away Game, a critically acclaimed television documentary exploring the soccer experiences of Australian players.

Shane Astani is the Vice President and the Director of Acquisition of Astani Enterprises. His firm has a major focus on retail and mixed use developments. This includes new luxury units in the City of Los Angeles. The firm presently operates/owns approximately 3,000 apartment units throughout Southern California and is currently developing approximately 1,200 units of apartments, condominiums and mix use projects in Downtown Los Angeles. Shane has a passion for fundraising that includes the Children's Hospital of Los Angeles and Children International. He also assists neighborhood interest groups and local police departments from Council for Affordable Housing to the Wilshire Unified School District Youth Soccer Program.

From 1998-2002 Rudi Bianchi wrote a column for Goal International Magazine and has also organized and promoted several professional soccer matches in partnership with the Los Angeles Coliseum from 1996 to 2000. He was also a member of the organizing committee for the 1994 World Cup in the United States. Rudi has coached and developed several players who went on to play in Division I college soccer programs. Rudi has been involved with soccer his entire life, as a player, coach and fan.



AEG is one of the leading sports and entertainment presenters in the world. AEG, a wholly owned subsidiary of the Anschutz Company, owns or controls a collection of companies including facilities such as STAPLES Center (Los Angeles, CA), Prudential Center (Newark, NJ), Sprint Center (Kansas City, MO), Citizen's Business Bank Arena (Ontario, CA), The Rose Garden (Portland,

OR), WaMu Theatre (Seattle, WA), XL Center (Hartford, CT), El Rey Theatre (Hollywood, CA), Colosseum at Caesars Palace (Las Vegas, NV), Target Center (Minneapolis, MN), Rentschler Field (Hartford, CT), NOKIA Theatre Times Square, NOKIA Theatre at Grand Prairie, Acer Arena (Sydney, AU), Beijing Olympic Basketball Arena, Color Line Arena (Hamburg), O2 World arena (Berlin) and The O2, a 28-acre development located in the eastern part of London along the Thames River which includes a 20,000-seat arena and over 650,000 sf of leisure and entertainment use; sports franchises including the Los Angeles Kings (NHL), Manchester Monarchs (AHL), Reading Royals (ECHL), Houston Dynamo and Los Angeles Galaxy (MLS), two hockey franchises operated in Europe, the Hammarby (Sweden) Futbol Club and management of privately held shares of the Los Angeles Lakers; AEG Facilities, a stand-alone affiliate that operates or consults with more than 90 of the industries preeminent venues worldwide; AEG Merchandising, a multi-faceted merchandising company; AEG Creative, a full-service marketing and advertising agency and AEG Global Partnerships, a division responsible for worldwide sales and servicing of sponsorships naming rights and other strategic partnerships.

In addition, AEG developed and operates The Home Depot Center, a \$150 million national training center located on the campus of California State University, Dominguez Hills in Carson, California which has been designated as an "Official U.S. Olympic Training Site" by the United States Olympic Committee and features major facilities for soccer, tennis, track & field, cycling, lacrosse, rugby, beach volleyball, boxing, football, field hockey, basketball and other sports in addition to concerts and corporate retreats as well as The David Beckham Academy and (Andre)Agassi's Safe Passage All Stars program.

Events such as the *Amgen Tour of California* cycling road race, the *ING Bay to Breakers* foot race and the *East West Bank Classic* WTA tennis tournament as well as an ongoing schedule of soccer exhibitions in the United States featuring the most popular international teams are part of the portfolio of AEG Sports.

AEG LIVE, one of the world's leading concert promotion and touring companies, with thirteen regional offices, is comprised of stand-alone affiliate divisions devoted to all aspects of live entertainment including: AEG LIVE Events, creators and producers of special events of all sizes; AEG-TV, creators of live events for television, DVD, pay-per-view, cinema and other electronic media; and AEG LIVE Tours & Special Events, Concerts West, Goldenvoice, The Messina Group and AEG Exhibitions, the company's national entertainment promotion and touring divisions. AEG LIVE is currently overseeing two international museum tours of the artifacts of King Tut: "Tutankhamun and the Golden Age of the Pharaohs" and "Tutankhamun: The Golden King and the Great Pharaohs," and produced *Celine Dion A New Day...Presented By Chrysler*, a spectacular theatrical production starring Dion and directed by Franco Dragone which just concluded an unprecedented five-year "residency" at The Colosseum at Caesars Palace in Las Vegas. AEG Live co-produces the *New Orleans Jazz & Heritage Festival* and *Goldenvoice*, the company's southern California-based regional promotion division created and operates the award winning annual *Coachella Valley Music & Arts Festival*.

AEG is overseeing the development of L.A. LIVE, a 4 million square foot / \$2.5 billion downtown Los Angeles sports, residential & entertainment district featuring the recently opened Nokia Theatre L.A. LIVE (7,100-seat live theatre) and Club Nokia (2,300 capacity live music venue), a 54-story, 1001-room convention "headquarters" destination (featuring The Ritz-Carlton and JW Marriott hotels and 224 luxury condominiums - The Residences at The Ritz Carlton - all in a single tower), a 14-screen Regal Cineplex, "broadcast" facilities for ESPN, along with entertainment, restaurant and office space. The company is also developing 12 arenas in China and an arena on the Las Vegas Strip.

Contact: Michael Roth, V.P., Communications - (213) 742-7155
For more information on AEG, visit: www.aegworldwide.com



CHARLIE NAIMO

On October 3, 2008, Charlie Naimo was named General Manager of the Los Angeles Sol.

Naimo, 37, has coached women's soccer on the W-League level since 1998. The North Brunswick, New Jersey native began his W-League coaching career with the Central Jersey Splash and immediately made his presence felt, earning W-League Coach of the Year honors in 1999.

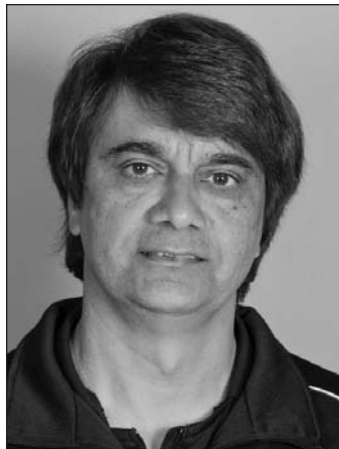
In 2004-2006, Naimo was the architect of one of the greatest transformations in league history with the New Jersey Wildcats. He took over a struggling Wildcats team and led the club into the elite of the W-League. In

his three seasons with the team, Naimo led the Wildcats to a 41-1 regular season record with W-League regular season titles in 2004 and 2006 and the W-League Championship in 2005. He was named W-League Coach of the Year for the second time in 2006.

After one season coaching Jersey Sky Blue in 2007, Naimo was named coach of the Pali Blues and lead his team to the 2008 W-League Championship.

From 2004-2009, a span of five seasons, Naimo amassed an astounding 67-3 regular season coaching record in the W-League.





ABNER ROGERS

On September 15, 2008, Abner Rogers was named the first-ever head coach of the Los Angeles Sol.

A nationally respected coach, the London-born Rogers, 55, had served as the President and Director of Coaching at the Laguna Hills Soccer Club Eclipse since 2001. Rogers can be attributed with creating the program philosophy, curriculum and guidelines, including coaches' education, which has propelled the club into national prominence.

Rogers has had extensive experience directing college showcases for elite teams from the U.S., highlighting players from the ages of Under 15-Under 18. For his accomplishments at the youth level, Rogers has been awarded the California Youth Soccer Association Coach of the Year honor, twice (1995 and 2005).

Rogers has developed some of America's top talent in leading the Eclipse, a club that he founded, to national championships in 2002 and 2005. In addition, he has served as the head coach of the United States Adult Soccer Association's national team (USASA). Prior to his success with the Eclipse and the USASA team, Rogers was the head coach of the Region IV Women's Olympic Development Program (ODP) team which won Gold Medals at the U.S. Soccer Festival in 1996, 1998, 2000 and 2002.

Rogers has guided 11 players to the professional ranks, 27 to regional teams, 18 to national teams and 5 players to World Cup competition.



HUBERT BUSBY, JR.

On March 1, 2009, Hubert Busby, Jr. was named assistant coach of the Los Angeles Sol.

A former Jamaican International goalkeeper, he was most recently the Vancouver Whitecaps FC (USL-First Division) Technical Director and Academy Coach. Busby has also spent time as a player with the Toronto Lynx (PDL), Montreal Impact (USL-First Division) and Ottawa Wizards (Canadian Professional Soccer League) and the Whitecaps as well as Crystal Palace (The Championship) and Millwall in England and Caldas Sport Clube (Portuguese second division) and Telstar (Dutch second division).

After retiring as a player, Busby, 39, he earned his USSF "A" license, spending more than 10 years coaching the women's programs at Fairleigh Dickinson University and Queens University. His first professional coaching experience was in 2003 with the Ottawa Wizards (Canadian Soccer League), and he led the Wizards to a conference title. In 2004, he was appointed as Canadian Youth Team Coach for the National Training Centre in Eastern Canada and Technical Director for the Kanata Soccer Club.

In 2005, he was named the Head Coach for the Toronto Lynx, servicing in that capacity for one season. After leaving the Lynx, he coached in Canada before becoming the Whitecaps FC's Technical Director and Academy coach in 2007.



NEIL POWELL

On March 1, 2009, Neil Powell was named goalkeeper coach of the Los Angeles Sol.

Powell comes to the Los Angeles Sol from the Laguna Hills Soccer Club Eclipse, where he has served in various capacities since 2004, most recently Director of Coaching.

Powell, 34, was born in Carshalton, England, where he began to play soccer at a young age. He showed enough promise early in his youth to be named to the Under-12 and Under-14 academy teams for English Premier League side Tottenham Hotspur.

He later spent eight years in semi-professional soccer in a variety of leagues in England before immigrating to the United States.

In the USA, Powell has coached goalkeepers for both the UC-Santa Barbara men's (1999-2001) and women's (2003-2004) soccer teams as well as a variety of clubs, including the Eclipse, which he joined as assistant director of coaching in 2004 before assuming director duties last year.



Bronto is proud to be on the WPS team, keeping this loyal community connected through email.

Building relationships and trust with your fans is critical for sports teams. Bronto understands that. We combine outstanding service, robust features and comprehensive analytics to deliver what you need for creating successful, relevant email marketing campaigns. Visit bronto.com to learn more.

bronto.com • 888.BRONTO.1



The Home Depot Center



The Home Depot Center is a 125-acre, \$150 million development in Carson, featuring state-of-the-art stadiums and facilities for soccer, tennis, track & field, cycling, lacrosse, rugby, volleyball, baseball, softball, basketball and other sports. Designated as an "Official U.S. Olympic Training Site," The Home Depot Center is the nation's most complete training facility for Olympic, amateur and professional athletes.

Created around a 27,000-seat soccer stadium, 8,000-seat tennis stadium, 10,000-seat track & field facility and a 2,450-seat indoor velodrome – The ADT Event Center – the complex is located on the campus of California State University, Dominguez Hills. The Home Depot Center is home to four professional sports teams – Major League Soccer's (MLS) Los Angeles Galaxy and Chivas USA, Women's Professional Soccer's (WPS) Los Angeles Sol and Major League Lacrosse's (MLL) Los Angeles Riptide. In addition, the site is the U.S. Soccer Federation's (USFF) national team training headquarters and the location of the United States Tennis Association's (USTA) USA High Performance National Training Center. The development is also designated as an official training site for USA Cycling and USA Track & Field. The David Beckham Academy for youth soccer, Andre Agassi's Safe Passage All Stars at-risk youth tennis program and the nationally recognized Athletes' Performance training center for elite and professional athletes are all based at The Home Depot Center.

Since opening on June 1, 2003, with the inaugural Home Depot Track & Field Invitational, The Home Depot Center has hosted some of the finest national and international competitions in the world. In the facility's first year of operation, it hosted the 2003 MLS All-Star Game, 2003 MLS Cup game and the 2003 FIFA Women's World Cup championship match. Since then, The Home Depot Center has hosted major soccer tournaments and matches, including the qualifying for the prestigious Copa Libertadores – InterLiga, SuperLiga, CONCACAF Men's & Women's Gold Cup matches, the World Series of Football and the annual Honda Super Clásico, featuring Los Angeles' intra-city rivalry, the Los Angeles Galaxy versus Chivas USA. Tennis events at The Home Depot Center include the annual East West Bank Classic tennis tournament, a Tier II Sony Ericsson WTA tour stop since 2004, showcasing tennis' most elite female athletes. The nation's premier indoor velodrome, the ADT Event Center, hosted the UCI Track Cycling World Cup Classics 2005–2007, and, in 2005, hosted the World Championships. Across three disciplines (soccer, tennis, cycling), more than 45 U.S. athletes who competed in the 2008 Beijing Olympics trained at The Home Depot Center in preparation for the Games.

The Home Depot Center's commitment to athletics and training also extends to the surrounding communities. Tennis courts, soccer training fields and a three-mile jogging trail with 12 fitness stations around the perimeter of the development is available to local residents as well as other facilities and amenities. Through foundations established by AEG-operated entities such as the Galaxy, the Los Angeles Kings (NHL) and STAPLES Center, more than \$5 million has been pledged to community organizations in the last seven years, including new donations targeting the local Carson community established by The Home Depot Center Charitable Foundation.

The Home Depot Center is southern California's legacy to sports, building character through competition.

Media Contact

Alison Groendal, Director of PR/Communications
(310) 630-2032 or agroendal@homedepotcenter.com
More Information www.homedepotcenter.com

STADIUM INFO

The Home Depot Center
 18400 Avalon Blvd.
 Carson, CA 90746
 Press Box Phone: 310.630.2288
 Press Box Fax: 310.630.2289

DIRECTIONS

Via 110 Freeway South (from Downtown L.A, Pasadena, Glendale & Burbank areas)

Exit on 190th Street. Make a left on 190th St., which becomes Victoria St. and make a right on Avalon Blvd.

Via 110 Freeway North (from San Pedro & Palos Verdes areas)

Take the 91 Freeway Eastbound. Exit on Avalon Blvd. Make a left on Avalon Blvd.

Via 405 Freeway South (from LAX, Santa Monica, West L.A, San Fernando Valley)

Exit on Vermont. At the bottom of the ramp, make a left on 190th St., which becomes Victoria St. Turn right on Avalon Blvd.

Via 405 Freeway North (from Long Beach, Orange County)

Exit on Avalon Blvd. Make a right on Avalon Blvd.

Via 91 Freeway West (from East L.A County, North Orange County & Inland Empire)

Exit on Avalon Blvd. for Reserved Parking. Make a left on Avalon Blvd.

Via Artesia Blvd. (SR-91) East (from Beach Cities)

Take the 91 Freeway Eastbound. Exit on Avalon Blvd. Make a left on Avalon Blvd.

KEY CONTACTS

| | |
|-------------------------|--|
| Main Phone: | 310-630-2000 or info@homedepotcenter.com |
| Box Office: | 310-630-2020 877-4-SOL-TIX (LA Sol tickets only) 877-3-GALAXY (LA Galaxy tickets only) 877-CHIVAS-1 (CD Chivas USA tickets only) |
| Parking Hotline: | 310-630-2060 (English) 310-630-2061 (Spanish) |
| Guest Services Hotline: | 310-630-2055 |
| Media Inquiries: | Alison Groendal, Director of PR/Communications 310-630-2032 or agroendal@homedepotcenter.com |



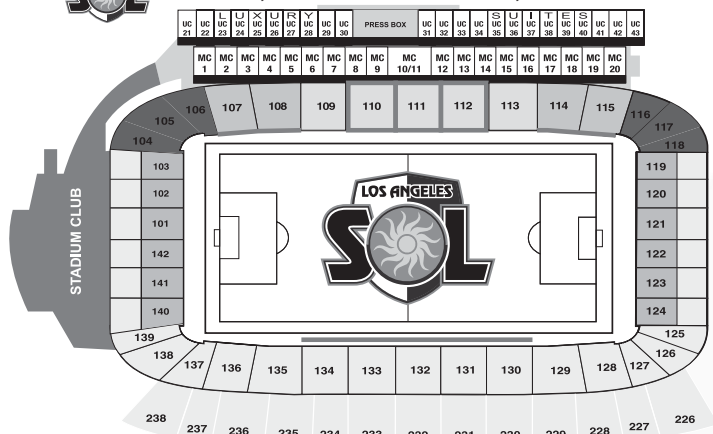
Photography: Robert Mora

The Stadium

The Stadium



LOS ANGELES SOL SEATING



FULL 10 games
HALF 5 games
MINI-PLAN 3 games
GROUP 10+ per game
INDIVIDUAL

| | | | | | |
|----------------------|-------|-------|-------|------|-------|
| Field Level Sideline | \$625 | N/A | N/A | N/A | \$100 |
| Front Row Sideline | \$420 | N/A | N/A | N/A | \$50 |
| Club | \$500 | N/A | N/A | N/A | \$60 |
| Center Sideline | \$315 | \$185 | \$120 | \$35 | \$42 |
| Sideline | \$250 | \$145 | \$90 | \$27 | \$32 |
| Corners | \$190 | \$110 | \$69 | \$20 | \$25 |
| Endline | \$105 | \$75 | \$45 | \$15 | \$20 |



TICKETING INFO: 1-877-4-SOL-TIX (476-5849)
or visit www.LosAngelesSol.com

FACILITIES

- Soccer Stadium – 27,000 capacity
- Tennis Stadium – 8,000 capacity
- Track & Field facility – 8,000 permanent seats (up to 20,000 capacity)
- ADT Event Center – indoor velodrome – 2,450 capacity
- 18 tennis courts (14 hard courts; 4 clay courts)
- 10 soccer training fields (including two artificial surface fields)
- 2 sand beach volleyball courts
- Three-mile jogging trail with 12 fitness stations around the perimeter of facility
- The American Express Stadium Club restaurant

HOME TEAMS & TENANTS

- Los Angeles Sol** (Women's Professional Soccer)
- Los Angeles Galaxy** (Major League Soccer)
- Club Deportivo (CD) Chivas USA** (Major League Soccer)
- U.S. Soccer Federation (USSF)** National Team Training Headquarters
- United States Tennis Association (USTA)** USTA Player Development and High Performance Training Center
- USA Cycling** National Team Training Headquarters
- USA Track & Field** – Official Training Site
- The David Beckham Academy** Youth Soccer Academy
- Agassi's Safe Passage All-Stars** Tennis and scholastic academy for at-risk youth

ALPHABETICAL ROSTER

| NAME | NO. | POSITION | HEIGHT | COLLEGE/LAST TEAM | HOMETOWN |
|--------------------|-----|---------------------|--------|--------------------------------|-------------------------------|
| Camille Abily | 20 | Midfielder | 5'6" | Olympique Lyonnais | Rennes, France |
| Greer Barnes | 5 | Midfielder | 5'7" | West Virginia | Rye, NY |
| Brittany Bock | 11 | Midfielder/Forward | 5'7" | Notre Dame | Naperville, IL |
| Shannon Boxx | 7 | Midfielder | 5'8" | Notre Dame | Redondo Beach, CA |
| D Brittany Cameron | 0 | Goalkeeper | 5'8" | University of San Diego | Dublin, CA |
| Stephanie Cox | 14 | Defender/Midfielder | 5'6" | University of Portland | Elk Grove, CA |
| Han Duan | 9 | Forward | 5'7" | Dalian Football Club, Liaoning | Dalian, China |
| Allison Falk | 3 | Defender | 6'0" | Stanford | Danville, CA |
| Kendall Fletcher | 2 | Defender | 5'6" | North Carolina | Cary, NC |
| Johanna Frisk | 21 | Defender | 5'7" | Umea IK | Sweden |
| Val Henderson | 1 | Goalkeeper | 5'7" | UCLA | Orinda, CA |
| Katie Larkin | 18 | Forward/Midfielder | 5'5" | BYU | Draper, UT |
| Karina LeBlanc | 23 | Goalkeeper | 5'9" | University of Nebraska | Maple Ridge, BC |
| Manya Makoski | 22 | Midfielder | 5'4" | Arizona State | Trumbull, CT |
| Marta | 10 | Forward | 5'4" | Umea IK | Dois Riachos, Alagoas, Brazil |
| Aya Miyama | 8 | Midfielder | 5'2" | Okayama Yunogo Belle | Chiba, Japan |
| D Lisa Sari | 12 | Midfielder | 5'7" | University of Portland | Longview, WA |
| Aly Wagner | 4 | Midfielder | 5'5" | Santa Clara University | San Jose, CA |
| Christie Welsh | 13 | Forward | 5'10" | Penn State University | Massapequa Park, NY |
| D McCall Zerboni | 6 | Midfield | 5'4" | UCLA | San Clemente, CA |

NUMERICAL ROSTER

| NO. | NAME | POSITION | HEIGHT | COLLEGE/LAST TEAM | HOMETOWN |
|------|------------------|---------------------|--------|--------------------------------|-------------------------------|
| D 0 | Brittany Cameron | Goalkeeper | 5'8" | University of San Diego | Dublin, CA |
| 1 | Val Henderson | Goalkeeper | 5'7" | UCLA | Orinda, CA |
| 2 | Kendall Fletcher | Defender | 5'6" | North Carolina | Cary, NC |
| 3 | Allison Falk | Defender | 6'0" | Stanford | Danville, CA |
| 4 | Aly Wagner | Midfielder | 5'5" | Santa Clara University | San Jose, CA |
| 5 | Greer Barnes | Midfielder | 5'7" | West Virginia | Rye, NY |
| D 6 | McCall Zerboni | Midfield | 5'4" | UCLA | San Clemente, CA |
| 7 | Shannon Boxx | Midfielder | 5'8" | Notre Dame | Redondo Beach, CA |
| 8 | Aya Miyama | Midfielder | 5'2" | Okayama Yunogo Belle | Chiba, Japan |
| 9 | Han Duan | Forward | 5'7" | Dalian Football Club, Liaoning | Dalian, China |
| 10 | Marta | Forward | 5'4" | Umea IK | Dois Riachos, Alagoas, Brazil |
| 11 | Brittany Bock | Midfielder/Forward | 5'7" | Notre Dame | Naperville, IL |
| D 12 | Lisa Sari | Midfielder | 5'7" | University of Portland | Longview, WA |
| 13 | Christie Welsh | Forward | 5'10" | Penn State University | Massapequa Park, NY |
| 14 | Stephanie Cox | Defender/Midfielder | 5'6" | University of Portland | Elk Grove, CA |
| 18 | Katie Larkin | Forward/Midfielder | 5'5" | BYU | Draper, UT |
| 20 | Camille Abily | Midfielder | 5'6" | Olympique Lyonnais | Rennes, France |
| 21 | Johanna Frisk | Defender | 5'7" | Umea IK | Sweden |
| 22 | Manya Makoski | Midfielder | 5'4" | Arizona State | Trumbull, CT |
| 23 | Karina LeBlanc | Goalkeeper | 5'9" | University of Nebraska | Maple Ridge, BC |

D - Developmental Player

The Stadium

The Players



CAMILLE ABILY

POSITION: Midfielder
HEIGHT: 5'6"
BIRTH DATE: December 5, 1984
HOMETOWN: Rennes, France
LAST CLUB: Olympique Lyonnais
COUNTRY: France
CAPS: 48 **GOALS:** 8
ACQUIRED: Rights obtained by Los Angeles following the WPS International Draft

#20

INTERNATIONAL

- Abily made her first appearance with the French National team on September 26, 2001
- Scored her 1st goal with Les Bleues on February 28, 2007, against China

PROFESSIONAL/CLUB

- Made her debut in Division 1 on September 17, 2000 against La Roche, and scored a goal
- Abily was voted best female player at the French Championship in 2006 and 2007
- Has won the French Championship three times and Challenge of France once



GREER BARNES

POSITION: Defender
HEIGHT: 5'7"
BIRTH DATE: November 5, 1987
HOMETOWN: Rye, NY
COLLEGE: West Virginia University
LAST CLUB: West Virginia Illusion
COUNTRY: USA
ACQUIRED: Selected with the 3rd pick of the fourth round (24th overall) by Los Angeles in the WPS Draft

#5

COLLEGE

- As a freshman in 2005, Barnes appeared in 13 matches for the Mountaineers
- Second Team All-Big East selection as a midfielder in her sophomore year
- As a junior, moved to defense and named to All-Big East First Team, while helping WVU secure 13 shutouts
- In senior season, named Big East Defensive Player of the Week after she helped WVU hold two conference foes to a combined four shots on goal in an undefeated weekend
- Received All-American honors in both junior and senior seasons



BRITTANY BOCK

POSITION: Midfielder/Forward
HEIGHT: 5'7"
BIRTH DATE: April 11, 1987
HOMETOWN: Naperville, IL
COLLEGE: Notre Dame
COUNTRY: USA
ACQUIRED: Selected with the 5th pick of the first round (5th overall) by Los Angeles in the WPS Draft

#11

INTERNATIONAL

- Featured member of the U.S. Under-20 team that competed at FIFA Under-20 World Championship in 2005
- Traveled to La Manga, Spain with U.S. Under-23 team for a pair of games in late January 2009

COLLEGE

- Named All-Big East all four years and was a Hermann Trophy semi-finalist in both her junior and senior seasons
- Named a NSCAA first team All-American and Big East Co-Offensive Player of the Year as a junior; also named team MVP
- One of 51 Notre Dame student-athletes to couple All-America and Academic All-America honors in the same year and only the 12th ND student-athlete to accomplish the feat in back-to-back years
- Helped lead her team to three College Cups during her tenure in South Bend
- Tallied almost one-half of her career 46 goals at Notre Dame via headers





SHANNON BOXX

POSITION: Midfielder
HEIGHT: 5'8"
BIRTH DATE: June 29, 1977
HOMETOWN: Redondo Beach, CA
COLLEGE: University of Notre Dame
LAST CLUB: New York Power (WUSA)
COUNTRY: USA
CAPS: 114 **GOALS:** 19
ACQUIRED: Allocated to Los Angeles by WPS

#7

INTERNATIONAL

- Boxx has represented the United States in international play 114 times
- A two-time Olympic gold medalist, in 2004 in Athens and in 2008 in Beijing
- Won a bronze medal at the 2007 FIFA Women's World Cup in China
- Tournament MVP at the 2004 and 2006 Algarve Cup
- Finished third in the voting for FIFA Women's Player of the Year in 2005

PROFESSIONAL/CLUB

- As a member of the New York Power in 2003, earned All-WUSA First Team honors and was named to the WUSA All-Star Team

COLLEGE

- Won a NCAA title in 1995 and won the Big East Scholar-Athlete Award in 1998
- Three-time All-Big East selection with the Irish
- A 1999 graduate of the University of Notre Dame where she earned degrees in Psychology and African American Studies



BRITTANY CAMERON

POSITION: Goalkeeper
HEIGHT: 5'8"
BIRTH DATE: December 3, 1986
HOMETOWN: Dublin, CA
COLLEGE: University of San Diego
LAST CLUB: Pleasanton Rage
COUNTRY: USA
ACQUIRED: Selected with the 2nd pick of the eighth round (52nd overall) by Los Angeles in the WPS Draft

#0

COLLEGE

- Played in 16 matches as a freshman, starting in 11 and posted a team best 1.84 goals against average
- As a sophomore, Cameron posted a team leading goals-against-average of 1.21 and recorded a record of 8-4-0, including a team leading five shutouts
- Cameron played in all 21 matches with 20 starts and recorded a team best 78 saves and nine shutouts in her junior season
- As a senior, Cameron helped USD to a #21 national ranking and also earned NSCAA 2nd team All-West, Defender of the Year in the WCC and First-Team All-WCC





STEPHANIE COX

POSITION: Defender/Midfielder
HEIGHT: 5'6"
BIRTH DATE: April 3, 1986
HOMETOWN: Elk Grove, CA
COLLEGE: University of Portland
COUNTRY: USA
CAPS: 54 **GOALS:** 0
ACQUIRED: Allocated to Los Angeles by WPS

#14

INTERNATIONAL

- An Olympic gold medalist with the USA in 2008
- Won a bronze medal at the 2007 FIFA Women's World Cup in China
- She made her first full international start in 2006 at the Algarve Cup
- Captain of the U.S. squad at the FIFA U-20 Women's World Cup Championship in Russia in 2006

COLLEGE

- She was also named an NSCAA First Team All-American as well as First-Team All-WCC and WCC Defender of the Year in 2005
- While at Portland, she won a NCAA title in 2005 and was named to the NCAA All-Tournament Team during the same year
- 2007 graduate of the University of Portland



HAN DUAN

POSITION: Forward
HEIGHT: 5'7"
BIRTH DATE: June 15, 1983
HOMETOWN: Dalian, China
LAST CLUB: Dalian Football Club, Liaoning
COUNTRY: China
CAPS: 115 **GOALS:** 65
ACQUIRED: Selected with the 3rd pick of the 4th round of the WPS International Draft

#9

INTERNATIONAL

- Debuted with the Chinese women's national team in December 2000
- Has figured prominently with the team in the last two FIFA Women's World Cups
- Han finished seventh in the voting for FIFA Women's Player of the Year in 2006 (the first Chinese player to finish in the top-10 since Sun Wen in 2002)

PROFESSIONAL/CLUB

- Participated in the 2001 Asian Football Confederation Women's Asian Cup
- Champion of the 2003 China Women's Super League
- Won the 2006 AFC Women's Asian Cup



ALLISON FALK

POSITION: Defender
HEIGHT: 6'0"
BIRTH DATE: March 31, 1987
HOMETOWN: Danville, CA
COLLEGE: Stanford
LAST CLUB: Pleasanton Rage
COUNTRY: USA
ACQUIRED: Selected with the 3rd pick of the second round (10th overall) by Los Angeles in the WPS Draft

#3

COLLEGE

- As a freshman, Falk started all 20 games in defense for the Cardinal and was named to the Pac-10 All-Freshman Team
- In her sophomore year, she was named to the All-Pac-10 Second Team, while helping the Cardinals to 15 shutouts and a 0.55 goals-against average
- Garnered All-Pac-10 Honorable Mention plaudits as a junior, helping lead a defense that had the nation's third best regular season goals-against-average
- Falk received All-Pac-10 Second Team honors in her senior year



KENDALL FLETCHER

#2

POSITION: Defender
HEIGHT: 5'6"
BIRTH DATE: November 6, 1984
HOMETOWN: Cary, NC
COLLEGE: University of North Carolina
LAST CLUB: Pali Blues
COUNTRY: USA
CAPS: 1 **GOALS:** 0
ACQUIRED: Selected with the 3rd pick of the second round (10th overall) by Los Angeles in the WPS General Draft

INTERNATIONAL

- Earned her first cap at the Algarve Cup vs. Norway on March 9, 2009
- A member of the U.S. Under-21 National Team that won the 2005 Nordic Cup championship and finished as runners-up in the 2006 Nordic Cup
- In 2002, started on the backline of the U.S. U-19 National Team that won the FIFA World Championship for that age group

COLLEGE

- Scored the game-winning goal for UNC in the Heels' NCAA semifinal victory over UCLA
- Fletcher started all 23 games for the Tar Heels during her junior season (2004) and was named Third-Team All-Region by the NSCAA. Fletcher finished the season with three goals and five assists for a total of 11 points
- As a senior in 2005, played in all 25 of the Tar Heels' games (all as a starter) and registered five goals and four assists



JOHANNA FRISK

#21

POSITION: Defender
HEIGHT: 5'7"
BIRTH DATE: March 19, 1986
HOMETOWN: Bjorklinge, Sweden
LAST CLUB: Umea IK
COUNTRY: Sweden
ACQUIRED: Rights obtained by Los Angeles following the WPS International Draft

INTERNATIONAL

- Part of Sweden's national team player pool in the run-up to the 2008 Olympic Games

PROFESSIONAL/CLUB

- Played for three seasons in her native Sweden with fabled club, Umea IK
- A starting central defender from the time she returned from a knee injury in 2007 until she signed with Los Angeles earlier this year
- Part of strong back line that helped Umea to a berth in the first-ever UEFA Women's Champions League



VALERIE HENDERSON

#1

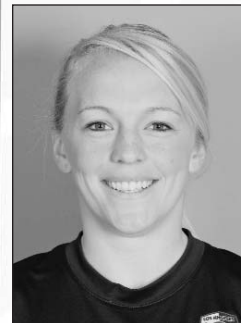
POSITION: Goalkeeper
HEIGHT: 5'7"
BIRTH DATE: April 19, 1986
HOMETOWN: Orinda, CA
COLLEGE: UCLA
LAST CLUB: Pali Blues
COUNTRY: USA
ACQUIRED: Selected with the 5th pick of the fifth round (33rd overall) by Los Angeles in the WPS Draft

INTERNATIONAL

- Competed for the USA at the 2006 FIFA World Youth Championships and named Woman of the Match after registering nine saves and earning a shutout in a 1-0 victory over France
- Helped lead the U.S. U-23 Team defeat Germany in the 2008 Nordic Cup Championship and did not allow a goal over the course of the tournament

COLLEGE

- All-time leader in career goalkeeping victories at UCLA
- Soccer America Freshman All-American 2004
- NSCAA/adidas Scholar All-American 2006, 2007
- Pac-10 Champion each of her four years



KATIE LARKIN

#18

POSITION: Midfielder/Forward
HEIGHT: 5'5"
BIRTH DATE: March 19, 1987
HOMETOWN: Draper, UT
COLLEGE: BYU
LAST CLUB: Celtic Storm
COUNTRY: USA
ACQUIRED: Selected with the 5th pick of the third round (19th overall) by Los Angeles in the WPS Draft

INTERNATIONAL

- Called in to United States Under-23 National Team for a pair of friendlies in Spain in early 2009

COLLEGE

- Named first team All-Mountain West Conference as a freshman, finishing fifth in the MWC in assists and was also named to the NSCAA/Adidas All-West First Team
- Larkin started in all 20 games as a sophomore and led BYU in goals, game winning goals, assists, points, shots and shots on goal. Larkin was named to the All-MWC First Team and First-Team All-West Region
- In Larkin's junior year, she was named MWC Offensive Player of the Week three times
- Larkin was a Hermann Trophy candidate in her senior season, while leading BYU with 11 goals



KARINA LeBLANC

#23

POSITION: Goalkeeper
HEIGHT: 5'9"
BIRTH DATE: March 30, 1980
HOMETOWN: Maple Ridge, British Columbia
COLLEGE: University of Nebraska
LAST CLUB: NJ Wildcats
COUNTRY: Canada
CAPS: 65
ACQUIRED: Selected with the 5th pick of the first round (5th overall) by Los Angeles in the WPS General Draft

INTERNATIONAL

- Made her international debut in 1999 during the Women's World Cup when Canada faced China
- A member of Canada's 2003 world cup team, where she started in four games and earned three shutouts during the tournament

PROFESSIONAL/CLUB

- Played for the New Jersey Wildcats of the W-League in 2005 and 2006
- A member of the WUSA's Boston Breakers from 2001-2003 and was the club's starting keeper in 2002 and 2003

COLLEGE

- Big-12 leader in goals against average (0.51) in 1999 - given Nebraska's Most Improved Player Award
- During senior year (2001), ranked fourth nationally in goals against average and was a Hermann Trophy finalist



MANYA MAKOSKI

#22

POSITION: Midfielder
HEIGHT: 5'4"
BIRTH DATE: April 18, 1984
HOMETOWN: Trumbull, CT
COLLEGE: Arizona State University
LAST CLUB: SoccerPlus CT
COUNTRY: USA
ACQUIRED: Selected with the fifth pick in the third round (19th overall) in the WPS General Draft

INTERNATIONAL

- Member of the 2002 US Under-19 World Cup Team that won the FIFA World Championships in Canada
- Won her third straight Nordic Cup as a member of the 2005 U.S. U-21 National Team

PROFESSIONAL/CLUB

- Member of the WPSL's SoccerPlus CT in 2008
- Tallied seven goals for the 2004 W-League runner-up New Jersey Wildcats Team

COLLEGE

- Was named an Academic All-American and earned First-Team All-Pac-10 honors in 2004
- Set the ASU single-season assist record with nine



AYA MIYAMA

#8

POSITION: Midfielder
HEIGHT: 5'2"
BIRTH DATE: January 28, 1985
HOMETOWN: Chiba, Japan
LAST CLUB: Okayama Yunogo Belle
COUNTRY: Japan
CAPS: 68 **GOALS:** 19
ACQUIRED: Selected with the 3rd pick of the second round (10th overall) by Los Angeles in the WPS International Draft

INTERNATIONAL

- The cornerstone of the Japanese Women's National Team; has scored 19 times in 68 games
- One of the best young players in the world, who can use both feet with equally impressive results
- At the 2008 Olympics in Beijing, helped lead Japan to semifinal stage for the first time in nation's history

PROFESSIONAL/CLUB

- Scored 62 goals in 110 games for the Yunogo Belle
- Was voted MVP of the Yunogo Belle by fans in 2007 and 2008



LISA SARI

#12

POSITION: Midfielder
HEIGHT: 5'7"
BIRTH DATE: October 18, 1984
HOMETOWN: Longview, WA
COLLEGE: University of Portland
LAST CLUB: Seattle Sounders
COUNTRY: USA
ACQUIRED: Selected with the 3rd pick of the tenth round (66th overall) by Los Angeles in the WPS Draft

INTERNATIONAL

- Trained with the Under-21 U.S. National Team in 2006 and the Under-23 National Team in 2007

COLLEGE

- Earned a starting spot for the Pilots as a freshman in 2003
- Earned All-Conference honors in 2005 and 2006
- Helped Portland to an undefeated season and an NCAA Championship in 2005



MARTA VIEIRA da SILVA

POSITION: Forward
HEIGHT: 5'4"
BIRTH DATE: February 19, 1986
HOMETOWN: Dois Riachos, Alagoas, Brazil
LAST CLUB: Umea IK
COUNTRY: Brazil
CAPS: 45 **GOALS:** 47
ACQUIRED: Selected with the 3rd pick in the first round (3rd overall) of the WPS International Draft

#10

INTERNATIONAL

- A three-time FIFA Women's World Player of the Year (2006-2008)
- Led Brazil to Pan American Games title and berth in final eight of FIFA Women's World Cup in 2003
- Spearheaded attack on Brazil side that won silver medal at Athens Olympics (2004) and gained worldwide recognition for their attractive, attacking football
- In 2007, scored tournament-high 12 goals to help Brazil to retain their crown at the Pan-American Games, on home soil in Rio de Janeiro
- Won the Golden Ball as the best player at the 2007 FIFA Women's World Cup in China and the Golden Boot as its top scorer
- In 2008, again led her country to final match at Olympic Football Tournament

PROFESSIONAL

- Played 2004-2008 seasons with Swedish club Umea IK, scoring 111 goals in 103 matches
- Umea captured the Swedish league title three times with her in the lineup (2005, 2006 and 2007)
- Club also took home the European club crown in 2004 and a runner-up finish in 2007



ALY WAGNER

POSITION: Midfielder
HEIGHT: 5'5"
BIRTH DATE: August 10, 1980
HOMETOWN: San Jose, CA
COLLEGE: Santa Clara University
LAST CLUB: San Diego Spirit (WUSA)
COUNTRY: USA
CAPS: 131 **GOALS:** 21
ACQUIRED: Allocated to Los Angeles by WPS

#4

INTERNATIONAL

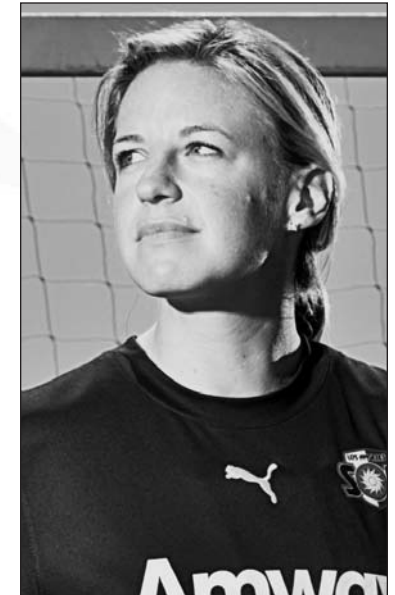
- Has represented the United States in international play 126 times and is a two-time Olympic gold medalist, in 2004 in Athens and most recently in 2008 in Beijing
- Has accumulated 21 goals and 38 assists in international competition

PROFESSIONAL

- Was selected as the No. 1 overall pick in the 2003 WUSA Draft by the San Diego Spirit
- Named to the All-WUSA Second Team in 2003

COLLEGE

- Scored game-winning goal against North Carolina to give Santa Clara the 2001 NCAA Championship
- In 2002, was awarded with the Missouri Athletic Club's Hermann Trophy presented to college soccer's top player
- Earned a degree in Combined Sciences from Santa Clara University in 2002





CHRISTIE WELSH

#13

POSITION: Forward

HEIGHT: 5'10"

BIRTH DATE: February 27, 1981

HOMETOWN: Massapequa Park, NY

COLLEGE: Penn State University

LAST CLUB: Washington Freedom (W-League)

COUNTRY: USA

CAPS: 39 **GOALS:** 20

ACQUIRED: Selected with the 5th pick of the second round (12th overall) by Los Angeles in the WPS General Draft

INTERNATIONAL

- Member of the U.S. Under-18 National Team in 1999
- Helped the U-21 U.S. National Team capture its fourth-consecutive Nordic Cup title in 2002
- Was a member of the 2005 U.S. National Team and scored the game-winning goal in the Championship game of the Algarve Cup against Germany

PROFESSIONAL

- Guided the Washington Freedom to a W-League Championship in 2007

COLLEGE

- As a freshman, she finished tied as the nation's leading scorer with 27 goals and 13 assists; helped to lead the Nittany Lions to first-ever Final Four appearance
- Was the first women's soccer player to receive Big Ten Player of the Year honors for three consecutive seasons
- Won the prestigious Hermann Trophy and M.A.C Player of the Year in 2001
- Collected 82 goals, 52 assists and 27 game-winning goals from 1999-2002 at Penn State, all Big Ten records



McCALL ZERBONI

#6

POSITION: Midfielder

HEIGHT: 5'4"

BIRTH DATE: December 13, 1986

HOMETOWN: San Clemente, CA

COLLEGE: UCLA

LAST CLUB: So Cal Blues

COUNTRY: USA

ACQUIRED: Selected with the 5th pick of the seventh round (47th overall) by Los Angeles in the WPS Draft

INTERNATIONAL

- Member of the 2003 Under-17 United States National Team

COLLEGE

- Scored a goal in her first collegiate match at UCLA, a 3-0 opening day victory over Long Beach State in 2005
- Became 16th player in UCLA history to register a hat trick in a 5-0 victory over Fresno State in the first round of the 2008 NCAA Tournament
- Was named MVP for UCLA's 2008 season



US Youth Soccer is the largest youth sports organization in the country. Made up of over 3 million registered boys and girls, ages 4 to 19, and nearly 1 million adult administrators and coaches. US Youth Soccer is the Game for All Kids.

US Youth Soccer programs include those for children just beginning to those who will represent our country in international competitions.

USYOUTHSOCCER.ORG





Boston Breakers



BOSTON BREAKERS

400 Blue Hill Drive, Suite 302
Westwood, MA 02090
Main: (781) 251-2100
Toll free: 1-877-HEY-BREAKERS (439-2732)
Fax: (781) 251-0611
www.bostonbreakers.com

PR CONTACT INFORMATION

Kevin Hassett – Communications Manager
(781) 320-3170 (O) • (339) 933-0020 (C)
Email: khassett@bostonbreakers.com

JOE CUMMINGS – GENERAL MANAGER

Joe Cummings has been a pioneer of soccer in the United States for more than 30 years. His career has encompassed experiences on both the coaching and administrative sides, covering the youth, high school, college and professional game. Prior to being named the General Manager for the Breakers, Cummings served as the CEO and Executive Director of the New England Soccer School and Amesbury Sports Park.

From 2000-2003, Cummings served as the President and General Manager of the WUSA's Boston Breakers. During that time Cummings was twice selected Executive of the Year, the only league administrator to receive the award. Since then he has also worked as Technical Advisor for the New England Revolution and Venue Manager for Gillette Stadium. He was inducted into the New England Soccer Hall of Fame in 2000.

TONY DiCICCO – HEAD COACH

Former U.S. Women's National Team head coach Tony DiCicco is one of the most recognizable names in women's soccer. DiCicco guided the USA to the 1996 Olympic Gold Medal and the historic 1999 World Cup championship, while accumulating a record of 103-8-8 – the most wins ever for a U.S. national soccer team head coach.

In 1981, DiCicco founded SoccerPlus Goalkeeper Schools. He created the FSASoccerPlus Football Club in 2003 and served as coach for the SoccerPlus CT Reds of the Women's Premier Soccer League (WPSL).

DiCicco served as the WUSA's COO in 2001 and its Commissioner in 2002 and 2003 and the Chairman of the Re-launch committee in 2004. This past fall he led the USA to the FIFA U-20 Women's World Cup title.

HARVARD STADIUM

Harvard Stadium
95 N. Harvard St.
Allston, MA 02134

Built in 1903, Harvard Stadium is the nation's oldest stadium, and was a 25th anniversary gift from the Class of 1879. Marveled for its Greek stadium and Roman circus elements, Harvard Stadium is recognized as a National Historic Landmark and is able to accommodate 30,323 fans. In 2006, the stadium was upgraded with the addition of a new surface, permanent lighting and a removable all-weather bubble which allows for year-round use of the facility. The Boston Cannons professional lacrosse team also plays their home games at Harvard Stadium.



Boston Breakers

FEATURED PLAYERS



Kristine Lilly
Position: Midfielder/Forward
Height: 5'4"
Hometown: Wilton, CT
Last Club: Boston Breakers (WUSA)
Country: USA

Kristine Lilly is a two-time World Cup and Olympic champion. She is the world's most capped player (man or woman) with 342 caps over her 21-year career with the national team. She is second in U.S. and world history in both goals (129) and assists (98).

Lilly has been named the U.S. Soccer Female Athlete of the Year three times in her career, and finished second in the 2006 Women's World Player of the Year award.



Amy Rodriguez
Position: Forward
Height: 5'4"
Hometown: Lake Forest, CA
Last Club: Laguna Hills Eclipse
Country: USA

Amy Rodriguez was the No. 1 pick in the 2009 WPS Draft. Rodriguez was the only senior collegiate player on the 2008 Gold Medal-winning U.S. Olympic soccer team at last summer's Beijing Games. Known as "A-Rod" in soccer circles, Rodriguez assisted on Carli Lloyd's game-winning goal in the Gold Medal match against Brazil.

Prior to the Olympic triumph, she won an NCAA title in 2007 with the University of Southern California, where she earned All-PAC 10 and All-American honors. She was USC's first-ever soccer medalist.



Kelly Smith
Position: Forward
Height: 5'6"
Hometown: Watford, England
Last Club: Arsenal Ladies
Country: England

Widely regarded as one of the top women's soccer players in the world, Kelly Smith is a two-time finalist for the FIFA World Player of the Year Award. She was named to the FIFA Women's World Cup All-Tournament Team in 2007 after notching four goals in four matches, and was voted Player of the Tournament at the 2007 Four Nations Tournament in China.

With the Arsenal Ladies, Smith helped the squad to the "quadruple," in 2007, winning the English Women's Premier League, FA Cup, League Cup, and UEFA Women's Cup (Europe's top club competition). She has played with the English National Team since she was 16 years old.



Boston Breakers

PRESEASON ROSTER

| Name | Position | Height | Hometown | Previous Team |
|--------------------------|----------|--------|---------------------|---------------------------|
| Nancy Augustyniak Goffi | D | 5'5" | Peachtree City, GA | FC Indiana |
| Stacy Bishop | M | 5'8" | Land O' Lakes, FL | Tampa Bay Hellenic |
| Candace Chapman | D/M | 5'7" | Ajax, Ontario | Vancouver Whitecaps |
| Brittany Cooper | M/F | 5'6" | Albuquerque, NM | Albuquerque Asylum |
| Abby Crumpton | F/D | 5'7" | Rochester Hills, MI | Charlotte Lady Eagles |
| Fabiana | F | 5'7" | Brazil | Corinthians (Brazil) |
| Ariel Harris | D | 5'6" | Holly Springs, NC | Univ. of North Carolina |
| Angela Hucles | M/F | 5'7" | Virginia Beach, VA | U.S. National Team |
| Christine Latham | F | 5'8" | Calgary, Alberta | Atlanta Silverbacks |
| Amy LePeilbet | D | 5'6" | Crystal Lake, IL | Pali Blues |
| Kristine Lilly | M/F | 5'4" | Wilton, CT | U.S. National Team |
| Allison Lipsher | GK | 5'9" | Honolulu, HI | Ajax America |
| Kristine Luckenbill | GK | 5'9" | Paoli, PA | FC Indiana |
| Allison Martino | M | 5'6" | Draper, UT | Boston Renegades |
| Heather Mitts | D | 5'5" | Cincinnati, OH | U.S. National Team |
| Kacey Moore | D | 5'8" | Mission Viejo, CA | University of Texas |
| Sophia Mundy | M | 5'3" | Houston, TX | Value FC (Iceland) |
| Jennifer Nobis | F | 5'7" | Quincy, IL | Umeå Södra FF (Sweden) |
| Ashley Phillips | GK | 5'8" | Peabody, MA | Atlanta Silverbacks |
| Amy Rodriguez | F | 5'4" | Lake Forest, CA | U. of Southern California |
| Kelly Schmedes | F | 5'6" | Odessa, TX | Charlotte Eagles |
| Marisha Schumacher-Hodge | M | 5'4" | Los Angeles, CA | Boston University |
| Alex Scott | D | 5'4" | England | Arsenal Ladies FC |
| Kelly Smith | F/M | 5'6" | Watford, England | Arsenal Ladies FC |
| Maggie Tomecka | M | 6'0" | Shrewsbury, MA | SoccerPlus Conn. |
| Sue Weber | D | 5'4" | Islip, NY | L.I. Rough Riders |

EVERY WEEK, LIVE AND EXCLUSIVE!



WPS SUNDAY on FSC



FOR A COMPLETE TELECAST SCHEDULE, VISIT FOXSOCCER.COM on *msn*.

LIVE IT HERE

Congratulations WPS on Your Inaugural Season!



Insurance • Risk Management • Wealth Management Services

For insurance services, contact:

Jonathan Axel • jon.axel@hubinternational.com • 310-568-5934

www.hubinternational.com

At your service in all 50 United States and the provinces and territories of Canada.



Chicago Red Stars



CHICAGO RED STARS SOCCER CLUB

7300 West 71st Street
Bridgeview, IL 60455
Main: (708) 496-9500
Toll free: 1-866-WPS-2009
Fax: (708) 496-9515
www.chicagoredstars.com

PR CONTACT INFORMATION

Jim Houghton
Director of Marketing & Communications
(708) 496-9512 (O) • (508) 228-9206 (C)
Email: jhoughton@chicagoredstars.com

Rob Coons
Media Relations Coordinator
(309) 648-1973 (C)
rcoons@chicagoredstars.com

MARCIA MCDERMOTT – GENERAL MANAGER

Marcia McDermott is the first General Manager of the Chicago Red Stars.

A successful career as a player with the legendary University of North Carolina teams of the late 1980s and coaching success at the collegiate and professional levels provide a strong foundation for her new position as Chicago's General Manager.

McDermott launched the women's soccer program at Northwestern in 1994 and led the Wildcats to a pair of NCAA tournament appearances. In 2001 and 2002 she coached the WUSA's Carolina Courage. In 2002, she guided the team to the regular season championship as well as post-season (Founders Cup II) title.

EMMA HAYES - HEAD COACH

Emma Hayes was named the Head Coach and Director of Soccer Operations for the Chicago Red Stars on May 15, 2008.

Since 2006, Hayes has served as first team Assistant Coach and Academy Director at the FA's Women's Premier League's top-ranked Arsenal Ladies Football Club in London, England. Hayes helped guide the Lady Gunners to an undefeated League record and won every competition England has to offer.

Prior to joining Arsenal, Hayes served as Head Women's Soccer Coach at Iona College in New Rochelle, NY. Hayes' honors at Iona included the 2004 Metro Atlantic Athletic Conference (MAAC) Coach of the Year and the 2004-2005 MAAC Conference Championships.

Hayes also served as Head Coach domestically from 2001-2003 in the W-League with the Long Island Lady Riders. The youngest female Head Coach in W-League history, Hayes was named 2002 National Coach of the Year..

TOYOTA PARK

Toyota Park
7000 S. Harlem Ave.
Bridgeview, IL 60455



Chicago Red Stars

FEATURED PLAYERS



Cristiane
Position: Forward
Height: 5'6"
Hometown: Osasco, São Paulo, Brazil
Last Club: Corinthians
Country: Brazil

A silver medalist at both the 2004 & 2008 Olympics, Cristiane was selected by the Chicago Red Stars with the fifth overall pick in the WPS Initial International Draft. The Brazilian national has finished third in voting for FIFA Player of the Year each of the past two years.

Known for her ability to perform under the international spotlight, Cristiane's five goals led all scorers at the Beijing Olympics. She also scored five goals in Athens to tie for the scoring lead at the 2004 games and added five more for Brazil at the 2007 FIFA Women's World Cup.



Carli Lloyd
Position: Midfielder
Height: 5'8"
Hometown: Delran, NJ
College: Rutgers University
Country: USA

The 2008 U.S. Soccer Female Athlete of the Year, Carli Lloyd helped lead the Americans to a gold medal at the Beijing Olympics. Lloyd played every minute of the 2008 Olympics and scored the only goal in the gold medal match victory over Brazil.

A fixture in the U.S. midfield, Lloyd scored four goals at the 2007 Algarve Cup, becoming the tournament's top scorer and earning MVP honors. A native of New Jersey, Lloyd finished her collegiate career as Rutgers University's all-time leader in points (117) and goals (50).



Lindsay Tarpley
Position: Forward
Height: 5'6"
Hometown: Kalamazoo, MI
College: University of North Carolina
Last Club: New Jersey Wildcats
Country: USA

An Olympic gold medalist, Lindsay Tarpley enjoyed her best year with the U.S. Women's National Team in 2008. With 12 goals scored on the year, Tarpley moved into the top 15 all-time scorers in U.S. history.

The Michigan native has championship experience domestically as well, having led the W-League New Jersey Wildcats to a championship in 2005 and winning a NCAA championship at the University of North Carolina in 2003.



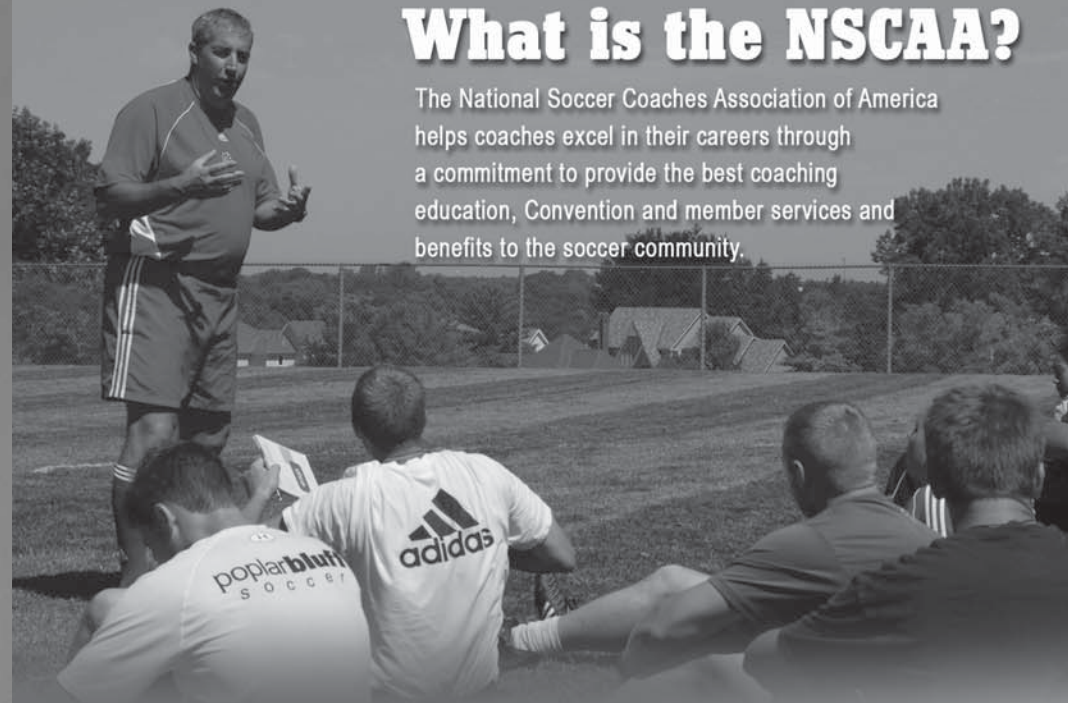
Chicago Red Stars

PRESEASON ROSTER

| Name | Position | Height | Hometown | Previous Team |
|-------------------|----------|--------|---------------------------|-----------------------|
| Daneshia Adams | F | 5'6" | Shaker Heights, OH | UCLA |
| Karen Carney | F | 5'3" | Birmingham, England | Loughborough |
| Lauren Church | GK | 5'5" | Hagerstown, MD | Georgia |
| Cristiane | F | 5'6" | Osasco, São Paulo, Brazil | |
| Marian Dalmy | D | 5'9" | Lakewood, CO | Santa Clara |
| Ifeoma Dieke | D | 5'5" | Glasgow, Scotland | Florida International |
| Tina Estrada | F | 5'5" | Fremont, CA | Santa Clara |
| Heather Garriock | M | 5'5" | Sydney, Australia | |
| Chioma Igwe | M | 5'6" | Belmont, CA | Santa Clara |
| Caroline Jönsson | GK | 5'10" | Lund, Sweden | |
| Brittany Klein | M | 5'3" | Arcadia, CA | Santa Clara |
| Nikki Krzysik | D | 5'7" | Clifton, NJ | Virginia |
| Carli Lloyd | M | 5'8" | Delran, NJ | Rutgers |
| Ella Masar | F | 5'5" | Urbana, IL | Illinois |
| Frida Östberg | M | 5'4" | Örnsköldsvik, Sweden | Umea |
| Megan Rapinoe | M | 5'7" | Redding, CA | Portland |
| Lauren Sesselmann | F | 5'8" | Green Bay, WI | Purdue |
| Natalie Spilger | D | 5'6" | El Cajon, CA | Stanford |
| Lindsay Tarpley | M | 5'6" | Kalamazoo, MI | UNC |
| Kat Tarr | D | 5'8" | Vancouver, WA | Missouri |
| Sarah Wagenfuhr | D | 5'3" | Colorado Springs, CO | Florida State |
| Michelle Wenino | D | 5'8" | Aurora, CO | Colorado |
| Lydia Williams | GK | 5'9" | Katanning, Australia | |
| Bonnie Young | D | 5'8" | Spring, TX | Penn State |

What is the NSCAA?

The National Soccer Coaches Association of America helps coaches excel in their careers through a commitment to provide the best coaching education, Convention and member services and benefits to the soccer community.



With an extensive array of member benefits, the NSCAA provides member coaches an unmatched level of service.

Our full range of coaching education courses are tailored for any level, while our annual Convention is a one-stop source for cutting-edge soccer concepts. From the volunteer parent to those in the college and professional ranks, there's an NSCAA course that's right for you.

The NSCAA encourages excellence through a wide-ranging awards and recognition program, including the national rankings for college and high school play and Coach of the Year and All-America programs at the college, high school and youth levels.



For more information or to become a member, visit us online at www.NSCAA.com or call 800-458-0678.



National Soccer Coaches Association of America

800 Ann Ave. • Kansas City, Kansas 66101 • 800-458-0678 • info@nscaa.com

Coaches Teach Players • We Teach Coaches



FC Gold Pride



FC GOLD PRIDE

Blue Coat Systems
Attn: BAWS, LLC
420 N. Mary Avenue
Sunnyvale, CA 94089
Main: (408) 541-3511
www.fcgoldpride.com

PR CONTACT INFORMATION

Crystal Fukumoto – Manager, Public Relations
(408) 541-3513 (O) • (415) 887-8804 (C)
E-mail: Cfukumoto@fcgoldpride.com

ILISA KESSLER - GENERAL MANAGER

Bay Area native, Ilisa Kessler was appointed as the GM of FC Gold Pride on November 1, 2008. Kessler brings an extensive body of work in soccer to the Pride front office having served as the Director of Operations for the San Jose Cyber Rays of the WUSA from 2001-2003, as well as serving as the Bay Area Staff and Accreditation Manager for the 1999 Women's World Cup.

Kessler graduated from the University of California, Santa Cruz with a BA in both Economics and Theatre Arts. Additionally, she holds a Masters in Sports Management from the University of San Francisco (USF). Kessler also serves as a professor at USF, where she teaches Event Operations for the Sport Management Graduate program.

ALBERTIN MONTOYA – HEAD COACH

Albertin Montoya is a distinguished coach, trainer and exceptional player. For the past ten years, Montoya has been coaching and training professional, collegiate and youth players and teams in the Bay Area.

Montoya has served as an assistant coach at the collegiate level for both his alma mater (2006-2007), Santa Clara University and most recently at Stanford where he helped the Cardinal to a final four appearance in the 2009 NCAA College Cup. In 2003, Montoya served as the Assistant Trainer of the San Jose Cyber Rays of the WUSA.

He played his first two years of collegiate soccer at North Carolina State University where he was a two-time Atlantic Coast Conference First-Team selection before transferring to Santa Clara University where he was an All West Coast Conference selection and finalist for the MACC Herman Trophy in 1996. He was a first-round draft pick of the San Jose Clash in 1997.

BUCK SHAW STADIUM

Buck Shaw Stadium
Santa Clara University
500 El Camino Real
Santa Clara, CA 95050

Buck Shaw Stadium is a 10,300 seat soccer specific stadium at Santa Clara University in Santa Clara, CA. Buck Shaw Stadium opened its gates on September 22, 1962 and was originally a multi-sport field, housing the SCU Football, Baseball and Soccer teams until 2005. In 2007, the stadium underwent a \$4 million renovation to expand seating from the original 6,800 seats to its current capacity.

FC Gold Pride



FEATURED PLAYERS



Leslie Osborne
Position: Midfield
Height: 5'8"
Hometown: Brookfield, WI
Last Club: Sacramento Storm
Country: USA

Leslie Osborne has been a member of the US Women's national team since 2003 and has represented the US in international play 59 times. She was a member of the World Cup team that brought home a bronze medal.

Osborne was a member of the 2001 Santa Clara Broncos National Championship team. She finished her career as a Bronco with 44 goals and 34 assists. The three-time West Coast Conference Defender of the year and three-time NSCAA First-Team All-American was a M.A.C. Hermann Trophy semifinalist her senior year. Osborne was also honored as the NCAA Honda Award winner as the nation's top female athlete in soccer in 2004.



Eriko Arakawa
Position: Forward
Height: 5'5"
Hometown: Tokyo, Japan
Last Club: NTV Belza
Country: Japan

She is highly regarded as one of Japan's biggest goal scoring threats. She has represented Japan since 2003 playing in the FIFA Women's World Cup in 2003 and 2007 and in the Olympic Games in 2004 and 2008.



Formiga
Position: Midfield
Height: 5'3"
Hometown: Águas de Lindóia, São Paulo, Brazil
Last Club: Botucatu
Country: Brazil

Formiga is a fixture of the Brazilian national team since 1995. Brazil's Captain helped bring home a silver medal at the 2008 and 2004 Olympic Games. She also participated in the 1996 and 2000 Olympic Games. She was a member of Brazil's 1995, 1999, 2003 and 2007 FIFA World Cup teams. Won the 2003 Pan American Gold Medal, scoring a goal in the final match against Canada making the score 2-1.

Did someone say Soccer!?

These are just a few member perks...

Participant and Liability Insurance Coverage

Referee Support

Coaching Support

Player's Rights-Fair Play

National Cup Programs

Centralized Communication



Sign up for our free online newsletter! www.usasa.com to register today!



ISIPHOTOS

Proud to be the Official Photographer of WPS

www.isiphotos.com • info@isiphotos.com • 650.906.7753

The Parents



FC Gold Pride

PRESEASON ROSTER

| Name | Position | Height | Hometown | College |
|---------------------|-----------------|---------------|-------------------------------|---------------------------|
| Ameera Abdulah | F/M | 5'3" | Denver, CO | University of Florida |
| Formiga | M | 5'3" | Águas de Lindóia, Brazil | Botucatu |
| Marissa Abegg | D | 5'7" | Lake Oswego, OR | Stanford |
| Stacie Alberico | F/M | 5'5" | Sunnyvale, CA | San Jose State University |
| Eriko Arakawa | F | 5'5" | Tokyo, Japan | |
| Nicole Barnhart | G | 5'10" | Gilbertsville, PA | Stanford |
| Liz Bogus | F | 5'6" | Sandy, UT | Arizona State University |
| Rachel Buehler | D | 5'5" | Del Mar, CA | Stanford |
| Brandi Chastain | F/M | 5'7" | San Jose, CA | Santa Clara University |
| Christina DiMartino | M | 5'2" | Massapequa, NY | UCLA |
| Carrie Dew | D | 5'9" | Encinitas, CA | Notre Dame |
| Kristen Graczyk | F/M | 5'6" | Albuquerque, NM | University of Connecticut |
| Tracy Hamm | D | 5'5" | Moraga, CA | California |
| Katie Hultin | GK | | Denver, CO | Washington State |
| Lindsay Massengale | D/M | 5'2" | Pocatello, ID | Clemson |
| Meagan McCray | GK | | Novato, CA | Santa Clara College |
| Tiffany Milbrett | F | 5'2" | Portland, OR | Portland |
| Jill Oakes | M | 5'7" | West Hills, CA | UCLA |
| Leslie Osborne | M | 5'8" | Brookfield, WI | Santa Clara University |
| Leigh Ann Robinson | M | 5'9" | San Diego, CA | University of San Diego |
| Christine Sinclair | F | | Burnaby, British Columbia, CA | University of Portland |
| Leah Tapscott | M/D | 5'5" | Madison, WI | Stanford |
| Tiffany Weimer | F | 5'3" | Bridgeport, CT | Penn State University |
| Allison Whitworth | G | 5'9" | Birmingham, AL | Auburn University |
| Kandace Wilson | F | 5'7" | Walnut, CA | CSU Fullerton |
| Kimberly Yokers | M | 5'6" | Seattle, WA | |



Sky Blue FC



SKY BLUE SOCCER

80 Cottontail Lane, Suite 400
Somerset, NJ 08873
(732) 271-7700
contact@skybluesoccer.com
www.SkyBlueFC.com

PR CONTACT INFORMATION

Melissa Dziowgo
Manager, Marketing & Public Relations
(732) 271-7700 ext. 305
mdziowgo@skybluesoccer.com

Patric Santo Pietro
Manager, New Media & Communications
(732) 271-7700 ext. 304
psp@skybluesoccer.com

Gloria Averbuch
Director, Marketing & Public Relations
(732) 271-7700 ext. 307
gaverbuch@skybluesoccer.com

IAN SAWYERS – GENERAL MANAGER & HEAD COACH

Ian Sawyers boasts an impressive coaching résumé, including a term as head coach of the San Jose CyberRays during all three years of the Women's United Soccer Association from 2001 to 2003. With San Jose, he garnered the WUSA Championship and was named WUSA Coach of the Year 2001, the first year of that league's existence.

As a college coach at Stanford, Sawyers racked up a 50-8-4 mark in his three years in charge of the Cardinal from 1993 to 1995, including a trip to the NCAA College Cup semifinals in 1993. He also coached the Sacramento Storm of the USWISL/W-League from 1993 to 1998.

TD BANK BALLPARK – BRIDGEWATER, NJ

Sky Blue FC will play its first two games of the 2009 season at TD Bank Ballpark in Bridgewater, NJ.

The 6,100 seat ballpark will be configured for soccer with a 110' x 70' grass playing surface running from home plate through third base. The ballpark features seats with backs and cup holders for fans to have every comfort when enjoying the game in the Premium Field Box, Field Box, and Upper Box seating areas. In addition, the ballpark features 20 luxury suites, a Picnic Area and an Executive Party Deck. The press box has internet access, camera platforms and the capability of handling 20 media personnel for both TV and radio broadcasts.

YURCAK FIELD – PISCATAWAY, NJ

The primary home venue for Sky Blue FC in its inaugural season will be Yurcak Field on the campus of Rutgers University in Piscataway, NJ. Officially known as "The Soccer/Lacrosse Stadium at Yurcak Field" in honor of Ronald N. Yurcak, a 1965 All-American Rutgers Lacrosse player, the stadium was dedicated in 1994 and has hosted the largest crowds to see college soccer in America.

Yurcak Field seats 5,000 fans in the grandstand with room for additional fans across the field in the stadium's lawn area. Featuring a 120' x 75' grass playing surface, the stadium is complete with state of the art irrigation and drainage systems, and a modern press box that has camera platforms and the capability of handling 30 media personnel for both TV and radio broadcasts

Sky Blue FC



FEATURED PLAYERS



Natasha Kai
Position: Forward
Height: 5'8"
Hometown: Kahuku, HI
College: University of Hawaii
Country: USA

Natasha Kai stormed onto the scene with the United States Women's National Team in 2006 at the Algarve Cup in Portugal with goals in each of her first two games and has been a dangerous striker on the international level since. Kai helped the US capture the gold medal at the 2008 Beijing Olympics when she scored the game-winning goal against Canada in extra time in the quarter finals. She also played in the 2007 FIFA Women's World Cup in China. On the collegiate level, she was the first player in Western Athletic Conference (WAC) history to earn three Player of the Year awards.



Heather O'Reilly
Position: Midfield/Forward
Height: 5'5"
Hometown: East Brunswick, NJ
College: University of North Carolina
Country: USA

At just 24 years of age, Heather O'Reilly is a veteran of the United States Women's National Team. She made her senior international debut in March of 2002 at 17-years old and has since captured two Olympic gold medals and has appeared at the 2007 FIFA Women's World Cup. O'Reilly also led the US Under-19 National Team to the inaugural FIFA Youth World Championship in 2002 and was named US Soccer's Young Female Athlete of the Year in 2004. On the collegiate level, O'Reilly captured two NCAA College Cup championships (2003, 2006) at the University of North Carolina.



Christie Rampone
Position: Defender
Height: 5'6"
Hometown: Point Pleasant, NJ
College: Monmouth University
Country: USA

Named the United States Women's National Team captain in 2008, Christie Rampone is an influential leader from her center defender position with 215 international caps to her credit. She has played in three FIFA Women's World Cups, including a championship trophy in 1999, and three Olympics including gold medals in 2004 and 2008. Rampone played for the New York Power in the WUSA from 2001 to 2003 appearing in 55 matches over three seasons. She was a star forward at Monmouth University finishing as the school's all-time leading scorer with 79 goals and 54 assists.



Sky Blue FC

PRESEASON ROSTER

| Name | Position | Country | College | Previous Team |
|------------------------|----------|-----------|---------------------|---------------------|
| Cori Alexander | GK | USA | Portland | Seattle Sounders |
| Anita Asante | D | England | | Chelsea Ladies |
| Yael Averbuch | M | USA | North Carolina | Arsenal World Class |
| Karen Bardsley | GK | England | Cal-State Fullerton | Pali Blues |
| Jenni Branam | GK | USA | North Carolina | Bälinge |
| Jen Buczkowski | M | USA | Notre Dame | Chicago Gaels |
| Keeley Dowling | D | USA | Tennessee | KIF Örebro |
| Mele French | F | USA | Oregon | Pali Blues |
| Jenny Hammond | D | USA | Clemson | Chicago Gaels |
| Noelle Keselica | M | USA | Virginia | Bälinge |
| Natasha Kai | F | USA | Hawaii | Kailua AA |
| Collette McCallum | M | Australia | | Perth Glory |
| Mary Therese McDonnell | D | Ireland | Illinois | Boston Renegades |
| Shannon Myers | GK | USA | Syracuse | Lancaster Inferno |
| Heather O'Reilly | M/F | USA | North Carolina | New Jersey Wildcats |
| Kelly Parker | M | Canada | Texas-El Paso | FC Indiana |
| Sophia Perez | GK | Mexico | San Diego State | SD United |
| Christie Rampone | D | USA | Monmouth | New York Power |
| Rosana | M | Brazil | | SV Neulengbach |
| Megan Schnur | M | USA | Connecticut | New England Mutiny |
| Christie Shaner | D | USA | Notre Dame | FC Indiana |
| Julianne Sithch | D | USA | DePaul | FC Indiana |
| Sarah Walsh | F | Australia | | Sydney FC |
| Kacey White | M/F | USA | North Carolina | Bälinge |



It all starts here...



800•USA•AYSO
www.soccer.org



Saint Louis Athletica



SAINT LOUIS ATHLETICA

One Regency Plaza Drive
Suite 150
Collinsville, IL
1-888-STL-GOAL
www.stl-wps.com

PR CONTACT INFORMATION

Tony Hubert, Director of Public Relations
(314) 565-0441 (C)
Email: thubert@saintlouisathletica.com

JORGE BARCELLOS – HEAD COACH & GENERAL MANAGER

On the heels of his success at the Beijing Olympic Games Jorge Barcellos joined Saint Louis Athletica as Head Coach and General Manager in September of 2008. Barcellos had held the role of Head Coach of the Brazilian Women's National Team since 2006. Under his leadership Brazil achieved their highest finishes in world championship events. In 2007 Barcellos guided Brazil to the FIFA Women's World Cup Final and in 2008 Barcellos would lead Brazil to the Olympic Finals. Jorge is first Brazilian coach to take the Women's National Team into back to back finals.

CARLOS MACHADO - ASSISTANT COACH

Carlos Machado was born and raised in Brazil. Carlos grew up in Porto Alegre and began his playing career at the age of 16 for San Jose FC. Carlos came to the United States in 1988 on a full athletic scholarship from Bethel College in Mishawaka, Indiana. Carlos began his coaching career in 1997 when he was named head coach and trainer for Team Chicago. Carlos would coach boys and girls squads for the Naperville, Illinois club for the next 10 years. During this time he met and had the first opportunity to work with Jorge Barcellos.

RALPH KORTE STADIUM

Southern Illinois University at Edwardsville.
Edwardsville, IL

The stadium is named for Ralph Korte (Core-TEE), a 1968 alumnus of SIUE. The stadium has 3,000 permanent seats which will expand to 5,000 plus for Saint Louis Athletica home games with the addition of bleachers on the east side of the field and behind the goals.

The field itself at Korte Stadium is named Bob Guelker (Gell-kerr) Field in honor of the former SIUE soccer head coach who served in that role from 1967 to 1986. The stadium was the sight of the 1994 U.S. Olympic Festival and in 1998 Jackie Joyner-Kersey competed in a nationally televised track and field event held here. Korte Stadium has hosted the 1997, 1998, and 2001 Division II Men's Outdoor Track and Field Championships as well. The sight of Korte Stadium has also hosted the 1970 and 1975 NCAA Men's Soccer Championships. Each Summer Illinois' Prairie State Games return to Korte Stadium for their track and field competitions. The stadium presently hosts a variety of high school, collegiate, national amateur and international athletic events.

Saint Louis Athletica



FEATURED PLAYERS



Lori Chalupny
Position: Midfielder
Height: 5'4"
Hometown: St. Louis, MO
College: University of North Carolina
Country: USA

Lori Chalupny has been capped by the United States over 80 times in her career. In 2008 she was a part of the U.S. Women's National Team that won the gold medal in the Beijing Olympic Games. In 2007 Lori was a member of the U.S. World Cup squad that would finish third in China. She is also a 6-time Algarve Cup veteran and has featured for the U.S. Youth National Teams in U-23 and U-19 World Cups.



Hope Solo
Position: Goalkeeper
Height: 5'9"
Hometown: Richland, WA
College: University of Washington
Country: USA

Hope Solo anchored the U.S. Women's Olympic team that won the gold medal in Beijing. Hope played in every minute of every game of the 2008 Olympics. Hope Solo has been a standout performer for the United States in World Cups and annual international tournaments. She is the first choice goalkeeper for the United States and is recognized by many as the best female goalkeeper in the world.



Tina Ellertson
Position: Forward
Height: 5'9"
Hometown: Vancouver, WA
College: University of Washington
Country: USA

Tina Ellertson joins Saint Louis Athletica as perhaps one of the most versatile players on the club and certainly one of the most athletic. Tina played collegiately with Hope Solo at the University of Washington. Tina was a member of the 2007 World Cup team and has played with the United States all over the globe. Tina is the mother of two children, her youngest daughter Mya was born on May 4th of 2008. Her first child, MacKenzie was born in 2001. Tina also has a twin sister, Crystal, that played college soccer at the University of Florida.



Saint Louis Athletica



PRESEASON ROSTER

| Name | Position | Previous Teams |
|---------------------|------------|-------------------------------------|
| Tina Ellertson | Forward | University of Washington & U.S. WNT |
| Hope Solo | Goalkeeper | University of Washington & U.S. WNT |
| Lori Chalupny | Midfielder | North Carolina & U.S. WNT |
| Eniola Aluko | Forward | England and Chelsea FC Ladies |
| Daniela | Midfielder | Brazil and Linkopings |
| Francielle | Midfielder | Brazil |
| Sara Larsson | Defender | Sweden |
| Melissa Tancredi | Defender | Canada |
| Amanda Cinali | Forward | University of Notre Dame |
| Angie Wozniak | Midfielder | University of Portland & U.S. WNT |
| Kerri Hanks | Forward | University of Notre Dame |
| Kia McNeill | Forward | Boston College |
| Stephanie Logterman | Defender | Texas |
| Elise Weber | Defender | University of Notre Dame |
| Niki Cross | Midfielder | UCONN |
| Jillian Loyden | Goalkeeper | Villanova |
| Lisa Stoia | Midfielder | West Virginia |
| Sheree Gray | Midfielder | Penn State University |
| Lydia Vandenbergh | Midfielder | Clemson University |
| Lyndsey Patterson | Forward | University of Tennessee |
| Ashlee Pistorius | Forward | Texas A&M University |
| Erin Kane | Goalkeeper | UW Milwaukee |
| Katie Kelly | Defender | Marquette |
| Erin Walter | Defender | DePaul |



1750 Teams, 12 Regional Tournaments, 280 Regional Champions,
 20 National Champions, Hundreds of College Coaches Scouting,
 Next Group of id2 Players Identified



Washington Freedom



WASHINGTON FREEDOM

Discovery Sports Center
18031 Central Park Circle
Boys, MD 20841
Main: (240) 449-1600
Toll free: 1-866-761-GOAL (761-4625)
Fax: (240) 449-1631
www.washingtonfreedom.com

PR CONTACT INFORMATION

Jim Higgins – Director of Communications
(240) 449-1613 (O) • (443) 926-2513 (C)
jim.higgins@washingtonfreedom.com

MAUREN HENDRICKS - CHAIRWOMAN

A passionate supporter of youth athletics and gender-equality in team sports, Hendricks played a leadership role in the public-private partnership that created the world-class Maryland SoccerPlex in Germantown, Md. and currently manages the Washington Freedom.

Hendricks served 11 years as Vice-Chairman of the Maryland Soccer Foundation, Inc., the non-profit entity that raised and managed the private sector funding for the 24-field complex. The successful financial model she helped to create functions as a national standard for community sports facilities.

For her work in managing youth soccer teams, advocating for public and private support of youth soccer facilities, and helping to spearhead women's professional soccer, the National Soccer Coaches Association of America (NSCAA) named Hendricks as an Honorary All American at its 2006 meeting in Indianapolis..

JIM GABARRA – HEAD COACH

The original coach of the Freedom, Gabarra hopes the new version of the Freedom will be able to duplicate what he did in the final season of the WUSA – win a league championship. A member of the U.S. National Team from 1986-89 and a player for the U.S. Olympic team at the Seoul Olympics in 1988, success has followed Gabarra as he took the Freedom to the WUSA playoffs two out of three years before leading the team to a W-League championship in 2007.

MARYLAND SOCCERPLEX

18031 Central Park Circle
Boys, MD 20841

Opened in October 2000, the Maryland SoccerPlex welcomes more than 600,000 visitors a year. Although the majority of visitors come from the local soccer clubs and leagues that play more than 4,500 matches at the complex, teams from all over the country come to participate in some of the most competitive youth soccer tournaments in the country. The Championship Stadium of the SoccerPlex becomes the home of the Washington Freedom in 2009.

Part of the 24-field complex, the Championship Stadium has seating for 6,000 spectators and has hosted a U.S. Olympic qualifier, MLS Open Cup matches, a CONCACAF Champions League match, the ACC Men's Soccer Championships, USL and W-League matches, training sessions for Argentina's Boca Juniors and the New Zealand National Team. In addition, the U.S. Youth Soccer National Championships were held at the Maryland SoccerPlex.



Washington Freedom

FEATURED PLAYERS



Abby Wambach
Position: Forward
Height: 5'11"
Hometown: Rochester, NY
Last Club: Washington Freedom (WUSA)
Country: USA

One of the top players in the world, Wambach returns to the Nation's Capitol in 2009 to once again play for the Freedom, where she was the WUSA Rookie of the Year in 2002.

Wambach has 99 goals in 127 caps for the U.S. Women's National Team and is a three-time U.S. Soccer Female Athlete of the Year. She was also a member of the 2004 gold medal winning Olympic team and the 2003 and 2007 third place finishing Women's World Cup teams.



Cat Whitehill
Position: Defender
Height: 5'7"
Hometown: Birmingham, AL
Last Club: New Jersey Wildcats (W-League)
Country: USA

After missing out on her dream of playing professional soccer with the WUSA, Cat Whitehill joins the Freedom as one of the most experienced defenders currently on the Women's National Team (129 caps).

Hailing from Birmingham, Ala., Whitehill has been a member of the national team since 2000 and was part of the 2004 gold medal winning Olympic team and 2003 and 2007 third place finishing Women's World Cup teams.

Whitehill is a graduate of North Carolina and won the M.A.C. Hermann Trophy as college soccer's top player. She helped lead North Carolina to a 27-0-0 record and NCAA championship as a senior, the second NCAA championship of her career.



Homare Sawa
Position: Midfielder
Height: 5'4"
Hometown: Tokyo, Japan
Last Club: Beliza, NTV
Country: Japan

Arguably the best player in the history of Japan's women's national team, Sawa returns to the U.S. to play soccer after having previously played for the Atlanta Beat of the WUSA from 2001-2003.

Sawa scored the first goal in franchise history for the Beat and helped the team into the playoffs in each of the three seasons of the WUSA. She returned to Japan after the 2003 WUSA season and was named the Women's Player of the Year for the Asian Football Confederation in 2004 and 2008.



Washington Freedom

PRESEASON ROSTER

| Name | Position | Height | Hometown | Previous Team |
|----------------------|----------|--------|-------------------|--|
| Briana Scurry | GK | 5'8" | Dayton, MN | Atlanta Beat (WUSA) |
| Jill Gilbeau | D/F/M | 5'5" | San Diego, CA | Washington Freedom (W-League) |
| Cat Whitehill | D | 5'7" | Birmingham, AL | New Jersey Wildcats (W-League) |
| Joanna Lohman | D/M | 5'5" | Silver Spring, MD | Balinge (Sweden) |
| Lori Lindsey | M | 5'5" | Indianapolis, IN | Washington Freedom (W-League) |
| Parrissa Eyorokon | M/F | 5'5" | West Chester, OH | |
| Sonia Bompastor | D | 5'4" | Mer, France | Olympique Lyonnais (France) |
| Allie Long | M | 5'7" | Northport, NY | |
| Homare Sawa | M | 5'4" | Tokyo, Japan | NTV Beliza (Japan) |
| Emily Janss | D/M | 5'3" | Brandon, FL | Washington Freedom (W-League) |
| Sarah Huffman | M | 5'4" | Flower Mound, TX | Roa IL (Norway) |
| Kristin DeDycker | D/M | 5'8" | Denver, CO | Denver Diamonds (WPSL) |
| Lisa De Vanna | F | 5'2" | Perth Australia | Perth Glory (Australia) |
| Rebecca Moros | M/F | 5'5" | Larchmont, NY | Washington Freedom (W-League) |
| Abby Wambach | F | 5'10" | Rochester, NY | Washington Freedom (WUSA) |
| Alex Singer | D | 5'9" | Rye, NY | Washington Freedom (W-League) |
| Becky Sauerbrunn | D | 5'7" | St. Louis, MO | Washington Freedom (W-League) |
| Christen Karniski | D | 5'5" | Iowa City, IA | Washington Freedom (W-League) |
| Claire Zimmeck | F | 5'7" | Fairfax, VA | Northern Virginia Majestics (W-League) |
| Madison Keller | D/M | 5'10" | Clarksburg, MD. | Washington Freedom (W-League) |
| Jayne Leigh Cargnoni | D/M | 5'2" | San Diego, CA | |
| Kati Jo Spisak | GK | 6'2" | St. Louis, MO | Washington Freedom (W-League) |



Marta likes her wings spicy with a little kick.
Recognize Awesome.



THE PUMA KING XL | FG WMNS
Worn by Marta of the L.A. Sol
pumafootball.com



Founding Partner of Women's Professional Soccer.



WPS Information

WPS MISSION STATEMENT

Our mission is to be the premier women's soccer league in the world, and the global standard by which women's professional sports are measured.

WOMEN'S PROFESSIONAL SOCCER - LEAGUE OFFICE

1000 Brannan St. Suite #401
San Francisco, CA
Main Phone: (415) 553-4469
Fax: (415) 553-4459
www.womensprosoccer.com

BOARD OF GOVERNORS

| | |
|-------------------|--------------------------|
| Brian NeSmith | FC Gold Pride (Bay Area) |
| Michael Stoller | Boston Breakers |
| Peter Wilt | Chicago Red Stars |
| Scott Hanley | Los Angeles Sol |
| Thomas Hofstetter | Sky Blue FC (NJ) |
| Jeff Cooper | Saint Louis Athletica |
| Maureen Hendricks | Washington Freedom |

LEAGUE STAFF

| | |
|-------------------|--|
| Tonya Antonucci | Commissioner |
| Mary Harvey | Chief Operating Officer |
| Vicki Veenker | League General Counsel |
| Jason Cohen | Director of Business Development/Associate Counsel |
| Rachel Epstein | Director of Marketing |
| Rob Penner | Director of Communications |
| Thom Meredith | League Operations Consultant |
| Karyn Lush | Head of New Media |
| Aaron Burch | League Development/Relationships Manager |
| Jill Coy | Marketing Manager |
| Aileen Nasypany | Office Manager/Assistant to the Commissioner |
| Amanda Vandervort | Web Coordinator |

ABOUT WPS

Women's Professional Soccer is the highest-level women's professional soccer league in North America. Formed in September 2007 as the result of the efforts of the Women's Soccer Initiative, Inc., WPS, begins play March 29, 2009, consisting of seven teams across the country.



WPS Information

The markets for the 2009 season are Bay Area, Boston, Chicago, Los Angeles, New Jersey/New York, St. Louis, and Washington, D.C. WPS has finalized Philadelphia as its eighth franchise for 2010, and expects to expand to Atlanta while continuing to explore additional potential franchises for 2010 and beyond. More markets will be announced as they are added to the League.

Franchises are individually owned and operated by a group of investors in each market. These include AEG-LA. Women's Soccer LLC, Bay Area Women's Soccer LLC, Boston Women's Soccer LLC, Chicago Professional Women's Soccer LLC, Hendricks Investment Holdings LLC (Washington D.C.), St. Louis United Soccer LLC and Sky Blue Women's Soccer, Inc. (New Jersey/New York).

In addition, two-time NBA MVP Steve Nash and former Yahoo! President and COO Jeff Mallett are investors and part owners in the league.

Among the firms retained by WPS to provide professional services are:

- Cypress Consulting for Web Design
- McCann Erickson for Marketing
- Shearman & Sterling LLP for League Counsel
- Soccer United Marketing (SUM) for National Sponsorship Sales & Licensing



WPS LOGO

The WPS logo, developed by branding agency Adrenalin, Inc., features a deep navy, red and gold color scheme and showcases a familiar silhouette – FIFA World Cup champion, Olympic Gold Medal winner and Hall of Fame player Mia Hamm, renowned as a pioneer for women's soccer.

WPS TIMELINE

September 2003: Following the suspension of operations of the Women's United Soccer Association (WUSA), the WUSA Reorganization Committee is formed to determine the best method to re-launch a women's professional soccer league in the United States.

July 2004: The WUSA Reorganization Committee, the Women's Sports Foundation, and business executives Bob Greenberg and Chris Markgraf (both of whom go on to create WSII with Julie Foudy and Tonya Antonucci), hold a Summit in New York City to identify and examine the lessons learned from the WUSA's failure and to determine the best path forward toward the launch of a viable new league.

November 2004: As a result of the Summit, the not-for-profit Women's Soccer Initiative, Inc. (WSII) is formed with the support of the WUSA Players Association to promote and support all aspects of women's soccer in the United States chiefly by encouraging and enabling the creation of a world-class professional women's soccer league.

February 2005: The U.S. Soccer Federation and U.S. Soccer Foundation each provide operational grants to WSII to assist in supporting WSII's efforts to develop a viable business model and bring back women's professional soccer.

February 27, 2007: WSII CEO Tonya Antonucci announces that AEG; John Hendricks of Freedom Soccer LLC; Jeff Cooper of St. Louis United Soccer LLC; Soccer Initiative, LLC have signed letters of intent to become charter members of the new women's professional league.

April 18, 2007: WSII CEO Tonya Antonucci announces that Sky Blue Soccer and Boston Women's Soccer LLC have agreed to join the previously announced groups as charter members of the new women's professional league.

September 4, 2007: A new North American women's professional soccer league, under the temporary working title of Women's Soccer LLC, is formally established in the United States by seven investor groups, with play beginning in the spring of 2009. Initial teams will be based in Boston, Chicago, Los Angeles, New Jersey/New York, St. Louis, and Washington D.C. Tonya Antonucci is named the league's commissioner. Soccer United Marketing (SUM), the commercial arm of MLS, is named the league's representative for national sponsorship sales and licensing.

October 15, 2007: The League sets up temporary offices in downtown San Francisco, Calif. and hires Aaron Burch as League Relationships/Development Manager.

January 17, 2008: The League's brand name, logo and website are launched at the National Soccer Coaches Association Convention in Baltimore, Md. Joe Cummings is named Senior COO Consultant and Vicki Veenker is named General Counsel.

February 5, 2008: Two-time NBA MVP Steve Nash and former Yahoo! President and Chief Operating Officer Jeff Mallett become investors and part owners of the league.

February 15, 2008: Women's Professional Soccer (WPS) receives provisional Division 1 status at U.S. Soccer's Annual General Meeting (AGM). The league will receive full Division 1 status just prior to its inaugural season at the 2009 U.S. Soccer AGM in Orlando, Fla.

February 28, 2008: The League moves into its permanent offices at 1000 Brannan St., San Francisco, CA

May 27, 2008: Philadelphia investors sign a letter of intent with the League regarding an expansion team for the 2010 season.

July 8, 2008: Women's Professional Soccer (WPS) announces the post-Olympics timeline for National Team player allocation, drafts and team tryouts.

Aug. 11, 2008: Atlanta investors sign a letter of intent with the League regarding an expansion team for the 2010 season.

September 3, 2008: A group of Bay Area investors join the League for the 2009 WPS Inaugural Season.

September 16, 2008: In an announcement co-hosted by WPS Commissioner Tonya Antonucci and WPS Part-Owner and two-time NBA MVP Steve Nash in New York City, members of the U.S. Women's National Team player pool are allocated to WPS teams.

September 24, 2008: Women's Professional Soccer (WPS) announces the results of its WPS Initial International Draft, officially assigning the WPS-playing rights of those selected by the individual teams.

October 6, 2008: Women's Professional Soccer (WPS) and FOX Soccer Channel announce a multi-year partnership to televise a live national Sunday night WPS game of the week on America's premier soccer network beginning in 2009, the inaugural season for WPS.

October 6, 2008: The WPS General Draft is conducted, consisting of four rounds of selections of international and domestic players for all seven WPS teams.

December 15, 2008: Global sport lifestyle brand PUMA and Women's Professional Soccer (WPS) announce an exclusive partnership making PUMA an official founding partner of WPS and an official sponsor of all WPS franchises.

December 16, 2008: Women's Professional Soccer (WPS) announces its opening game and slate of home openers for the inaugural 2009 WPS Season. Headlining the list of games is the "WPS Inaugural Match" featuring the Los Angeles Sol against the Washington Freedom at The Home Depot Center in Carson, CA.

January 16, 2009: PUMA and Women's Professional Soccer (WPS) unveil the WPS Official Match Ball at the NSCAA Convention in St. Louis, MO.

January 16, 2009: Women's Professional Soccer (WPS) holds the 2009 WPS Draft. The Boston Breakers select USC standout and Olympic gold medalist, Amy Rodriguez, as the first-ever number one college draft selection.

January 29, 2009: Women's Professional Soccer (WPS) announces the playoff format and playoff dates, with the WPS Final scheduled for Aug. 22 at the home field of the WPS Regular Season champion.

February 5, 2009: The League announces the regular season schedule for its seven franchises. Each team will play a 20-game schedule with 10 home and 10 away matches.

February 24, 2009: PUMA, WPS founding sponsor, unveils WPS home and away uniforms at a fashion presentation in Manhattan, New York.

March 1, 2009: Women's Professional Soccer (WPS) players report to training camp and WPS pre-season begins.

March 16, 2009: Each team announces roster cut downs to 24 players per team.

March 25, 2009: Each team announces 18-player rosters (and four optional development players) for opening game.

March 29, 2009: The WPS Inaugural Match between Washington Freedom and Los Angeles Sol kicks-off at The Home Depot Center in Carson, Calif.





TONYA ANTONUCCI, COMMISSIONER

For over two decades, Tonya Antonucci has expressed her passion for women's soccer as a player, coach, executive and fan. Now her dedication to the game continues as she serves as WPS's first commissioner.

Antonucci was named WPS Commissioner on Sept. 4, 2007 after working as the CEO of Women's Soccer Initiative, Inc. (WSII) for two and a half years. At WSII, she successfully engineered the launch of a women's professional soccer league in the United States by devel-

oping a viable business model, determining the demographics of the fan base, cultivating investor support and identifying team markets.

Prior to joining WSII, Antonucci spent more than seven years with Yahoo, Inc., where as she launched Yahoo! Sports and Yahoo! Fantasy Sports, and served as Director of those properties. Subsequently, she was named General Manager of Yahoo's partnership with FIFA and oversaw the commercialization of the official, global web sites for the 2002 FIFA Men's and 2003 Women's World Cups.

In addition, Antonucci has worked as a product manager at Starwave, a software company funded by Microsoft's Paul Allen; as a content producer on a precursor to ESPN.com; and as an assistant women's soccer coach at Stanford University and Santa Clara University while working on an M.B.A. degree

A native of Everett, Wash. and a H.S. All-American and 1984 U.S. Jr. National Team member while at Mariner High School, Antonucci is a political science and economics graduate of Stanford University, where she played collegiate soccer, was named to the All-Far West team, and co-captained the Stanford team her senior year. Antonucci resides in the Bay Area.



MARY HARVEY, CHIEF OPERATING OFFICER

Mary Harvey brings her experience as a international soccer executive and Olympic Gold medalist to Women's Professional Soccer, where she was named Chief Operating Officer on Nov. 10, 2008.

Harvey was most recently the Director of Development at the Federation Internationale de Football Association (FIFA) in Zurich, Switzerland. When she signed on to join FIFA in 2003, Harvey became the first woman and first American to run a business division as a member of senior management at the international governing body. At FIFA, Harvey oversaw a team of 20 staff and 50 consultants globally to

deliver programs and projects to develop the sport worldwide. Harvey also initiated the launch of several important projects for the development of women's soccer in particular including a project that identified best practices in the development of the women's game globally, staging nearly a dozen seminars involving over 150 countries. The findings from this project were presented at the 4th FIFA Women's Football Symposium, a two-day event attended by 500 senior football executives from 200 countries.

Prior to her position at FIFA, Harvey worked for global consulting powerhouses, Deloitte and Accenture, and was a consultant to the CEO of the 1999 Women's World Cup on issues related to ticketing, pricing and marketing strategies.

On the field, Harvey enjoyed an eight-year career with the U.S. Women's National Team, playing from 1989-1996. She was the starting goalkeeper for the U.S. in the inaugural 1991 Women's World Cup and a member of the 1996 Olympic gold medal-winning team in Atlanta. She graduated with a Bachelor of Science from the University of California at Berkeley's Walter A. Haas School of Business and received her MBA from the Anderson School of Business at UCLA. She resides in San Francisco.

VICKI VEENKER, LEAGUE GENERAL COUNSEL

Vicki Veenker brings a strong and diverse legal background to the office of General Counsel. In addition to working with the League, she is Of Counsel to Shearman & Sterling LLP in its Menlo Park, California office. The founding partner of the firm's Silicon Valley Intellectual Property Group, she has extensive experience in intellectual property-related matters and is also a member of the firm's Sports Group. Veenker has been lead counsel to industry leaders in fields ranging from telecommunications to entertainment to biotechnology in patent, trademark, trade secret, and copyright cases. She also counsels clients on licensing and other transactions.

Veenker is a federal court mediator, sitting on the mediation panel for the Northern District of California. Previously, Veenker served as adjunct faculty member at the University of California's Hastings College of the Law and at Santa Clara University School of Law. Currently, she is a Director of the Law Foundation of Silicon Valley.

In 2002, Veenker was selected as one of the "Top 20 Lawyers Under 40" by *California Law Business*. She has been listed each year since 2001 as a "highly recommended" intellectual property attorney in Silicon Valley by the publisher of *Global Counsel* magazine in conjunction with Pricewaterhouse Coopers. Ms. Veenker has also been recognized for several years as a Northern California Super Lawyer by *Law & Politics* and *San Francisco* magazine.

Veenker earned her J.D. degree at the Georgetown University Law Center where she was editor-in-chief of the *Journal of Law & Technology*. Prior to attending law school, Ms. Veenker was an Associate at the Kettering Foundation. She holds a B.S. in Biochemistry and a B.A. in Political Science from Indiana University.



2009 Regular Season Schedule

SCHEDULE OVERVIEW

The 2009 WPS Regular Season will consist of 70 games among the seven WPS franchises from March 29-August 9, 2009 in a single table format conforming to FIFA and US Soccer rules. That will be followed by a three-game playoff [see post-season format] including the WPS Final on August 22 and a WPS All-Star Game at the end of the season.

Teams will play a 20-game regular season schedule with 10 home games and 10 away games. Each team will play the other teams in the league three times with a fourth game against two regional rivals to round out the 20-game schedule. Games will be played mostly on weekends with 14 games scheduled for weeknights, primarily on Wednesdays. Weeknight games will not begin until midway through the season on June 3.

2009 GAME SCHEDULE

| Date | Home Team | Away Team | Venue | Time (EST) |
|---------|-----------------------|-----------------------|--------------------------|------------|
| 3/29/09 | Los Angeles Sol | Washington Freedom | The Home Depot Center | 6 pm |
| 4/4/09 | St Louis Athletica | Chicago Red Stars | Korte Stadium | 8 pm |
| 4/5/09 | FC Gold Pride | Boston Breakers | Buck Shaw Stadium | 6 pm |
| 4/5/09 | Sky Blue FC | Los Angeles Sol | TD Bank Park | 4 pm |
| 4/11/09 | Washington Freedom | Chicago Red Stars | Maryland SoccerPlex | 6 pm |
| 4/11/09 | Boston Breakers | Saint Louis Athletica | Harvard Stadium | 7 pm |
| 4/11/09 | Sky Blue FC | FC Gold Pride | TD Bank Park | 7:45 pm |
| 4/18/09 | Washington Freedom | Boston Breakers | Maryland SoccerPlex | 7 pm |
| 4/19/09 | Los Angeles Sol | FC Gold Pride | The Home Depot Center | 4 pm |
| 4/19/09 | Chicago Red Stars | Sky Blue FC | Toyota Park | 6 pm |
| 4/25/09 | Saint Louis Athletica | Los Angeles Sol | Robert R Hermann Stadium | 4:30 pm |
| 4/25/09 | Chicago Red Stars | Boston Breakers | Toyota Park | 8:30 pm |
| 4/26/09 | FC Gold Pride | Washington Freedom | Buck Shaw Stadium | 6 pm |
| 5/2/09 | Boston Breakers | Los Angeles Sol | Harvard Stadium | 7 pm |
| 5/3/09 | FC Gold Pride | Sky Blue FC | Buck Shaw Stadium | 8 pm |
| 5/3/09 | Washington Freedom | Saint Louis Athletica | Maryland Soccerplex | 6 pm |
| 5/9/09 | Saint Louis Athletica | FC Gold Pride | Korte Stadium | 8 pm |
| 5/10/09 | Los Angeles Sol | Boston Breakers | The Home Depot Center | 4 pm |
| 5/10/09 | Chicago Red Stars | Sky Blue FC | Toyota Park | 6 pm |
| 5/15/09 | Los Angeles Sol | Sky Blue FC | The Home Depot Center | 10:30 pm |
| 5/16/09 | Chicago Red Stars | FC Gold Pride | Toyota Park | 8:30 pm |
| 5/17/09 | Boston Breakers | Washington Freedom | Harvard Stadium | 6 pm |
| 5/23/09 | Chicago Red Stars | Saint Louis Athletica | Toyota Park | 8:30 pm |
| 5/23/09 | Washington Freedom | Sky Blue FC | RFK Stadium | 5 pm |
| 5/24/09 | FC Gold Pride | Los Angeles Sol | Buck Shaw Stadium | 7 pm |
| 5/30/09 | Los Angeles Sol | Saint Louis Athletica | The Home Depot Center | 7 pm |
| 5/31/09 | Sky Blue FC | Boston Breakers | Yurcak Field | 6 pm |
| 5/31/09 | Washington Freedom | FC Gold Pride | Maryland SoccerPlex | 4 pm |
| 6/3/09 | Los Angeles Sol | Chicago Red Stars | The Home Depot Center | 10:30 pm |

2009 Regular Season Schedule



| Date | Home Team | Away Team | Venue | Time (EST) |
|------------|-----------------------|---------------------------|-----------------------|------------|
| 6/6/09 | Saint Louis Athletica | Sky Blue FC | Korte Stadium | 8 pm |
| 6/7/09 | FC Gold Pride | Chicago Red Stars | Buck Shaw Stadium | 8 pm |
| 6/7/09 | Los Angeles Sol | Washington Freedom | The Home Depot Center | 6pm |
| 6/13/09 | Washington Freedom | Chicago Red Stars | RFK Stadium | 5 pm |
| 6/13/09 | Sky Blue FC | Los Angeles Sol | Yurcak Field | 7 pm |
| 6/14/09 | Boston Breakers | Saint Louis Athletica | Harvard Stadium | 6 pm |
| 6/17/09 | Boston Breakers | FC Gold Pride | Harvard Stadium | 7 pm |
| 6/17/09 | Sky Blue FC | Chicago Red Stars | Yurcak Field | 7 pm |
| 6/20/09 | Saint Louis Athletica | Washington Freedom | Korte Stadium | 8 pm |
| 6/20/09 | Chicago Red Stars | Boston Breakers | Toyota Park | 8:30 pm |
| 6/21/09 | Los Angeles Sol | FC Gold Pride | The Home Depot Center | 6 pm |
| 6/24/09 | Saint Louis Athletica | Los Angeles Sol | Korte Stadium | 8 pm |
| 6/24/09 | Boston Breakers | Washington Freedom | Harvard Stadium | 7 pm |
| 6/27/09 | Los Angeles Sol | Chicago Red Stars | The Home Depot Center | 3 pm |
| 6/28/09 | Sky Blue FC | Saint Louis Athletica | Yurcak Field | 6 pm |
| 7/1/09 | Chicago Red Stars | Washington Freedom | Toyota Park | 8:30 pm |
| 7/4/09 | Sky Blue FC | Boston Breakers | Yurcak Field | 7 pm |
| 7/5/09 | FC Gold Pride | Saint Louis Athletica | Buck Shaw Stadium | 8 pm |
| 7/5/09 | Washington Freedom | Los Angeles Sol | Maryland SoccerPlex | 6 pm |
| 7/8/09 | Los Angeles Sol | Saint Louis Athletica | The Home Depot Center | 3 pm |
| 7/12/09 | Boston Breakers | Sky Blue FC | Harvard Stadium | TBD |
| 7/12/09 | Chicago Red Stars | FC Gold Pride | Toyota Park | 8 pm |
| 7/15/09 | Boston Breakers | Chicago Red Stars | Harvard Stadium | 7 pm |
| 7/15/09 | Sky Blue FC | Washington Freedom | Yurcak Field | 7 pm |
| 7/18/09 | Washington Freedom | Saint Louis Athletica | RFK Stadium | 5:30 pm |
| 7/19/09 | FC Gold Pride | Boston Breakers | Buck Shaw Stadium | 8 pm |
| 7/19/09 | Sky Blue FC | Chicago Red Stars | Yurcak Field | TBD |
| 7/22/09 | Saint Louis Athletica | Sky Blue FC | Korte Stadium | 8 pm |
| 7/23/09 | FC Gold Pride | Los Angeles Sol | Buck Shaw Stadium | 10 pm |
| 7/25/09 | Boston Breakers | Sky Blue FC | Harvard Stadium | 7 pm |
| 7/26/09 | Saint Louis Athletica | FC Gold Pride | Korte Stadium | TBD |
| 7/26/09 | Chicago Red Stars | Washington Freedom | Toyota Park | 8 pm |
| 7/29/09 | Washington Freedom | Boston Breakers | Maryland SoccerPlex | 7 pm |
| 8/1/09 | FC Gold Pride | Washington Freedom | Buck Shaw Stadium | 6 pm |
| 8/1/09 | Saint Louis Athletica | Boston Breakers | Korte Stadium | 8 pm |
| 8/2/09 | Chicago Red Stars | Los Angeles Sol | Toyota Park | 6 pm |
| 8/5/09 | Sky Blue FC | FC Gold Pride | Yurcak Field | 7 pm |
| 8/5/09 | Saint Louis Athletica | Chicago Red Stars | Korte Stadium | 8 pm |
| 8/8/09 | Washington Freedom | Sky Blue FC | Maryland SoccerPlex | TBD |
| 8/9/09 | FC Gold Pride | Saint Louis Athletica | Buck Shaw Stadium | 6 pm |
| 8/9/09 | Boston Breakers | Los Angeles Sol | Harvard Stadium | 4 pm |
| 8/15/09 | No. 3 | No. 4 | TBD | TBD |
| 8/18-19/09 | No. 2 | Winner of First Round | TBD | TBD |
| 8/22/09 | No. 1 | Winner of Super Semifinal | TBD | TBD |

Subject to change // all kick-off times listed in EST



Fox Soccer Channel Schedule

WPS SUNDAY ON FSC

Women's Professional Soccer and FOX Soccer Channel, America's premier soccer network, have a multi-year partnership to televise a live national Sunday night WPS game of the week, beginning the 2009 inaugural season called "WPS Sunday on FSC".

The agreement covers a minimum of 20 games over the course of the regular season and three playoff games. One postseason match on Aug. 18/19 and the WPS All-Star Game will be broadcast on FOX Soccer Channel, while one post-season match on August 15 and the WPS Final on August 22 will reach over 80 million homes on FOX Sports Net's owned and affiliated regional sports networks. FOX Soccer Channel's coverage features WPS pre-game and post-game shows and WPS round-up segments on FOX Soccer Report, plus content sharing across womensprosoccer.com and foxsoccer.com.

FOX Soccer Channel offers the most comprehensive coverage of world-class soccer available in the United States, including Major League Soccer, England's Barclays Premier League, Italy's Serie A, the Argentine First Division and Australian Hyundai A-League, as well as such global tournaments as the UEFA Cup, English FA Cup, FIFA Club World Cup, CONCACAF Champions League™, CONCACAF Gold Cup™ and 2010 FIFA World Cup™ qualifiers. As the Official Broadcast Partner of the United States Youth Soccer Association, FOX Soccer Channel also televises the United Soccer Leagues and NCAA Division I college men's and women's soccer.

The Nielsen-rated channel reaches more than 34 million cable and satellite households in the U.S. and Caribbean. To subscribe to FOX Soccer Channel, contact your local cable or satellite provider, or visit <http://www.foxsoccer.channelfinder.net/start.asp>.

2009 FSC TV SCHEDULE

| Date | Home Team | Away Team | Venue | Time (EST) |
|---------|-----------------------|-----------------------|-----------------------|------------|
| 3/29/09 | Los Angeles Sol | Washington Freedom | The Home Depot Center | 6 pm |
| 4/5/09 | FC Gold Pride | Boston Breakers | Buck Shaw Stadium | 6 pm |
| 4/11/09 | Washington Freedom | Chicago Red Stars | Maryland SoccerPlex | 6 pm |
| 4/19/09 | Chicago Red Stars | Sky Blue FC | Toyota Park | 6 pm |
| 4/26/09 | FC Gold Pride | Washington Freedom | Buck Shaw Stadium | 6 pm |
| 5/3/09 | Washington Freedom | Saint Louis Athletica | Maryland Soccerplex | 6 pm |
| 5/17/09 | Boston Breakers | Washington Freedom | Harvard Stadium | 6 pm |
| 5/24/09 | FC Gold Pride | Los Angeles Sol | Buck Shaw Stadium | 7 pm |
| 5/31/09 | Sky Blue FC | Boston Breakers | Yurcak Field | 6 pm |
| 6/7/09 | Los Angeles Sol | Washington Freedom | The Home Depot Center | 6pm |
| 6/14/09 | Boston Breakers | Saint Louis Athletica | Harvard Stadium | 6 pm |
| 6/21/09 | Los Angeles Sol | FC Gold Pride | The Home Depot Center | 6 pm |
| 6/28/09 | Sky Blue FC | Saint Louis Athletica | Yurcak Field | 6 pm |
| 7/5/09 | Washington Freedom | Los Angeles Sol | Maryland SoccerPlex | 6 pm |
| 7/12/09 | Boston Breakers | Sky Blue FC | Harvard Stadium | TBD |
| 7/19/09 | Sky Blue FC | Chicago Red Stars | Yurcak Field | TBD |
| 7/26/09 | Saint Louis Athletica | FC Gold Pride | Korte Stadium | TBD |
| 8/2/09 | Chicago Red Stars | Los Angeles Sol | Toyota Park | 6 pm |
| 8/9/09 | FC Gold Pride | Saint Louis Athletica | Buck Shaw Stadium | 6 pm |

Subject to change // all kick-off times listed in EST



Post-Season Format

WPS PLAYOFFS

Women's Professional Soccer (WPS) has blended traditional soccer culture and American playoff tradition to create a unique post-season format. Approved by the Board of Governors at the NSCAA Convention on January 15, 2009, the playoffs are expected to air in 80 million homes nationally on FOX Sports Net's owned and affiliated regional sports networks.

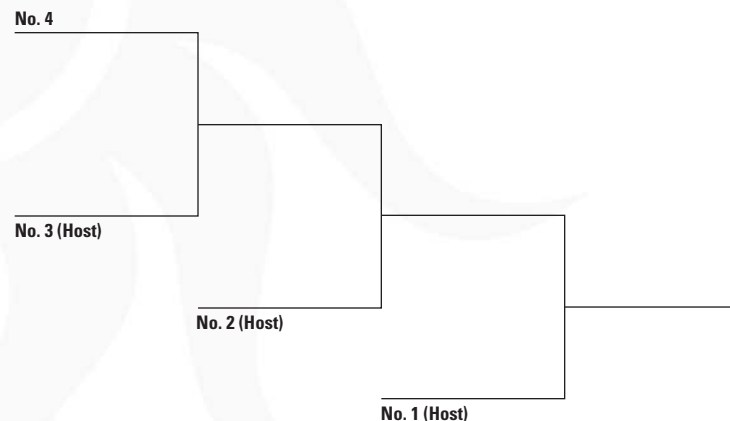
The playoff format will feature four teams and heavily reward the WPS team finishing atop the 2009 regular season schedule, titling them **WPS Regular Season Champions** and automatically placing them as host and participant in the **WPS Final**, the league's championship game.

Teams finishing the regular season as No. 3 and No. 4 will face each other at No. 3's stadium on August 15 for the **First Round**. The second place team in the regular season will receive a bye into the **Super Semifinal** and host the winner of the **First Round** on August 18/19. The winner of the **Super Semifinal** will then travel to the top-seeded team for the **WPS Final** on August 22.

Unique league trophies will recognize the teams that win the regular season and WPS Final.

WPS PLAYOFF FORMAT

| First Round | Super Semifinal | WPS Final | WPS Champion |
|-------------|-----------------|-----------|--------------|
| Aug 15 | Aug 18/19 | Aug 22 | |



CONDENSED RULES AND REGULATIONS OF THE GAME

Rule 1: The Field of Play

WPS fields will have a minimum width of 68 yards and a minimum length of 110 yards.

Rule 2: Number of Players

Each team consists of 11 players, including a goalkeeper.

Rule 3: Player Equipment

A player's uniform consists of a shirt, shorts, socks, shin guards and shoes. The goalkeeper wears colors that distinguish them from the other players and referees.

Rule 4: Referees

One referee, two referee assistants and a fourth official are appointed by US Soccer for each match. The referee maintains control of the game and his/her decisions regarding facts connected to play are final.

Rule 5: Duration of Play

The matches consist of two 45-minute periods. If a regular season match is tied after 90 minutes, the game is declared a tie. Allowance for time lost by substitutions, assessment of injured players, removal of injured players, or any other cause is at the sole discretion of the referee.

Rule 6: The Start of Play

A coin toss decides which team will kick off. Each team must be in its own half and the defending players must be at least 10 yards from the ball until it is played. After a goal, the team scored upon restarts play by kicking off. After halftime, the teams change ends and the opposite team to that which started the game kicks off.

Rule 7: Ball In and Out of Play

The ball is out of play when it has wholly crossed over the goal line, touchline, or if the referee has stopped the game. At all other times, the ball is in play.

Rule 8: Throw In

When the ball has wholly crossed the touchline, it is put back in play by a throw-in from the spot it went out and by a player from the opposing team to the player who last touched the ball.

Rule 9: Method of Scoring

A goal occurs when the whole of the ball has passed over the goal line, between the goal posts and under the crossbar, whether on the ground or in the air.

Rule 10: Offside

A player is offside if she is nearer to her opponent's goal line than both the ball and the second last opponent.

RED CARD AND YELLOW CARD SUSPENSION POLICY

Red card and yellow card accumulation suspensions collected during WPS Season Games will be served in the team's next WPS Season Game. Suspensions for red cards and accumulated yellow cards will carry over to Playoff Games. Suspensions earned in an Exhibition Game will be served in the next Exhibition Game. Any suspension for a red card during Playoff Games that would otherwise be served after the team's last WPS Season Game will carry over to the first game of the next WPS Season. For any suspension due to a red card or yellow card, the Player will continue to receive her pay, notwithstanding any fine which may be imposed in connection with such infraction.

Red Card

Infractions for which a player will receive a Red Card:

Is guilty of a serious foul play. (SFP)

Is guilty of violent conduct. (VC)

Spits at an opponent or any other person. (S)

Denies an opponent a goal or an obvious goal-scoring opportunity by deliberately handling the ball. (DGH)

Denies an obvious goal-scoring opportunity to an opponent moving towards the player's goal by an offense punishable by a free kick or penalty kick. (DGF)

Uses offensive, insulting or abusive language. (AL)

Receives a second caution (yellow card) in the same match. (2CT)

Red Card Accumulation

Red cards and suspensions will be levied for all WPS Games (including exhibitions). Players who receive a second yellow card in any single game are deemed to have received a red card. Any Player who receives a red card during any WPS Game will also be subject to the following:

For a first offense: Suspension for the remainder of the game in which the infraction occurred and, at least, the next WPS season (or exhibition) game;

For a second offense in any WPS Season (or in the case of exhibition games in any calendar year): A fine of \$250 and suspension for the remainder of the game in which the infraction occurred and, at least, the next WPS Season (or exhibition) game;

For the third offense in any WPS Season, (or in the case of exhibition games in any calendar year): A fine of \$500, suspension for the remainder of the game in which the infraction occurred and, at least, the next WPS Season (or exhibition) game, plus additional sanctions at the discretion of the League.

Yellow Card

Infractions for which a player will receive a Yellow Card:

Unsporting Behavior (UB)

Shows dissent by word or action (DT)

Persistently infringes the Laws of the Game. (PI)

Delays the restart of play (DR)

Fails to respect the required distance when play is restarted with a corner kick or free kick or throw-in. (FRD)

Enters or re-enters the field of play without the referee's permission. (E)

Deliberately leaves the field of play without the referee's permission. (L)

Yellow Card Accumulation

WPS has developed a yellow card accumulations system to determine suspensions by yellow card infractions, otherwise known as cautionable infractions, with the first one (1) game suspension occurring after a Player has accumulated 2 yellow cards in the same game resulting in one (1) red and a game dismissal. For Players accumulating yellow cards the following action is in place:

Three yellow cards to a single Player in three consecutive games played will result in that Player being suspended for the next match.

Four yellow cards to a single Player (nonconsecutive) accumulated will result in that Player being suspended for the next match.

A subsequent three cards (total of 7) by the same Player accumulated throughout the season will result in three matches suspension and fine (TBD).

If there is an third incident of three cards (10) by the same Player that Player will sit out a total of five matches and be imposed a fine (TBD).

Yellow Card Accumulation for Playoff Games

A list of Players in jeopardy of not being able to participate in the Playoffs due to the maximum number yellow cards earned will be available throughout the season. This list will be presented to Teams in advance of the Playoffs.

Players that accumulate their fourth (4) yellow card and/or are awarded their third yellow card in three consecutive games will be subject to a one game suspension during the playoffs.

Players that receive red cards during the playoffs may be assessed a fine and serve at least a one game suspension from their next playoff game.

Players that play any length of time in four (4) games without a yellow or red card will be cleared from accumulated list and recorded at zero (0), including going from seasonal games to playoff games.

Referees

| Referees | City | State |
|---------------------|---------------|-------|
| Bennett, Jennifer L | Foster City | CA |
| Brito, Veronica | New Orleans | LA |
| Butler, Shane | Imperial | MO |
| Domka, Margaret | Milwaukee | WI |
| Malhiwsky, Dallas | Omaha | NE |
| Mariscal, Felisha | Chula Vista | CA |
| Radford, Daniel | Long Beach | CA |
| Rivero, Jose Carlos | Elmsford | NY |
| Roslund, Bryan | Silver Spring | MD |
| Seitz, Kari | San Mateo | CA |
| Serafini, Sandra | Bahama | NC |
| Unkel, Ted | Sarasota | FL |
| West, Kristine | Richfield | MN |

Assistant Referees

| Assistant Referees | City | State |
|----------------------------|------------------|-------|
| Anderson, Ian | Santa Barbara | CA |
| Arblaster, Colin | Sacramento | CA |
| Brugman, Adam | San Diego | CA |
| Coleman, Debbie | Abingdon | MD |
| Cope, Allyse | Santa Cruz | CA |
| Cortes, Vicente | Piedmont | CA |
| Dellavia, Donald | Chicago | IL |
| Duffy, Marlene | Huntington Beach | CA |
| Dziedzic, Katherine (Kate) | Durham | NC |
| Hackett, Moo | Ashburn | VA |
| Ibanez, Christina | Cape Coral | FL |
| Johnson, Melanie | Taylors | SC |
| Kampmeiert, Mike | Sacramento | CA |
| Kreitzer, Matthew | Jessup | MD |
| Laudani, Maurizio | Milpitas | CA |
| Magouirk, Danielle | Gibbstown | NJ |
| Miguel, Teresa | Hamden | CT |
| Panduro, Miguel | Chicago | IL |
| Perez, Veronica | Sacramento | CA |
| Poplstein, Shannon | Chesapeake | VA |
| Quan, Deleana E | Sacramento | CA |
| Schmitz, John E | Herndon | VA |
| Toth, Stephanie | Rolling Meadows | IL |
| Willing, Amy | Lansing | MI |

List of WPS Match Officials accurate as of March 10, 2009



WPS Camps

Women's Professional Soccer (WPS) and UK Soccer Camps (UKISC) have an exclusive multi-year partnership making UKISC the official camp provider of WPS with a maximum of 22 locations in 2009 to be designated as "WPS Camps."

WPS Camps will feature a variety of weekly camp options for various age groups in over 20 markets across the country with the mission of providing "The Best Possible Soccer Experience." The camps will include challenging and dynamic training environments, while allowing players to personally experience what it takes to play in the pros from the pros. Camps will include player appearances from the stars of the new league at every camp.

In areas where WPS does not have franchises, the league will partner with UK International to bring the WPS experience to neighborhood soccer fields and communities with a variety of camp options.

For more information, go to www.womensprosoccer.com/camps.aspx



Credentials/Parking

CREDENTIALS

Season media credentials will be issued to recognized newspapers, magazines, television and established radio stations making reasonable requests. To qualify, an outlet must cover a minimum of eight (8) of the team's home games. Because of limited photo credentials, it is impossible to allow a freelance photographer access unless assigned to shoot for a specific story or project.

Season and single game credential requests can be submitted to the Los Angeles Sol Media Relations department.

MEDIA WILL CALL

Members of the media needing to pick up individual game credentials should go to the Media Will Call booth located at the far left box office window at Northwest Entrance of the stadium. Each person must pick up their own credential and present corresponding photo identification.

Media Will Call opens two hours prior to the scheduled kick-off. All media must enter through the press gate entrance located at the far left of the Northwest Entrance. Media credentials will not be honored at any other entrance.

All credentials are non-transferable and any unauthorized use will subject the bearer to ejection from The Home Depot Center and confiscation of the credential.

PARKING

A limited number of parking passes will be available for the media.

Members of the media seeking parking passes are advised to make their requests as early as possible. Please note that the Los Angeles Sol will not be able to accommodate all requests. Paid parking is available in Lot 12 and other stadium lots.

TV news trucks will be directed to park in Lot 17 located near the Southeast Entrance of the stadium. TV trucks which provide satellite, uplink or microwave functions will be required to secure access to in-house media panels to make prior arrangements with Calvin Spencer – Broadcast Manager at The Home Depot Center at 310-630-2017 to secure locations.

ROAD CREDENTIALS

Members of the media traveling to road games should submit requests for credentials to the Los Angeles Sol Media Relations department no later than five (5) days prior to the road game.



Press Box/Wireless Access

PRESS BOX

The Los Angeles Sol Media Relations department will maintain the club's press box on the third level at midfield in The Home Depot Center.

The press box will open two hours before kickoff. Admittance is limited to working media members with credentials only. The professional intent of the press box is to provide a meeting and working place for writers, reporters, broadcasters and game personnel.

It is imperative that season pass holders requesting press box seating are required to notify this office of their intentions to cover a game in order to receive press box seating. Family members and guests will not be accommodated in the press box. Abuse of the press box and press privileges will result in forfeiture of your press pass.

TELEPHONE/WIRELESS ACCESS

A limited number of courtesy charge-a-call telephones will be provided in the media workroom. Requests for individual dedicated telephones should be made through the Los Angeles Sol Media Relations Media Relations department.

The Home Depot Center offers wireless internet access in all areas of the press box and photographers' workroom. The access is free of charge and works with most wi-fi enabled computer equipment.

For those computers that do not have wi-fi capabilities, the press box and photographers' work room are equipped with charge-a-call phone lines for dial up access.

These lines must be shared.

MEALS

Meal Vouchers will be available to a limited number of media in the press box on the third floor of The Home Depot Center beginning one hour prior to kickoff.



Game Procedures

BROADCAST

In making requests for broadcast credentials, please specify requirements for spotters and/or statisticians. These services must be arranged in advance, and once they are made, the statisticians must be compensated whether used or not.

Broadcast booths are located on the second level of The Home Depot Center Press Box. Broadcasters can access the booths through the Southwest stairs or elevator on the West side of the stadium. In addition, media can access the broadcast level through the stairs located in the press box.

GAME NOTES / STATISTICS

Game notes and statistics will be available in the press box. Statistics will be distributed to each seat throughout the game at halftime and fifteen (15) minutes following the game.

The Los Angeles Sol Media Relations staff will distribute all statistics and materials from the Press Operations room in the Press Box.

Periodic announcements will also be made during the game.

FIELD ACCESS

Only working newspaper, magazine and network TV photographers and club/stadium officials are permitted on the field during the game. Press Box Passes will not be honored for field admittance at any time, unless authorized by the Los Angeles Sol.

LOCKER ROOM ACCESS

Following the conclusion of the match, the mixed zone area in the main tunnel will be open to the media. There will be NO locker room access.

Your cooperation and professional courtesy is asked in maintaining a proper working atmosphere for post game interviews. Absolutely no autographs are allowed during media access periods.

PHOTOGRAPHERS

ENG crews and still photographers holding proper credentials may position themselves along either endline at field level.

Immediately prior to each match, photographers who wish to shoot the traditional pre-game team photo will be escorted on cue to the midfield sideline by photo marshals. Photographers will be instructed to walk only on the sidelines – never on the field of play – en route to these temporary sideline positions. Once team photo(s) have been taken, photographers will be asked to quickly return to their endline photo positions.

During the match, photographers are advised that they have restricted freedom of movement. At no time during the match can photographers shoot from directly behind the goal. Also, movement from one end of the field to the other is allowed only at halftime on the sideline opposite the team benches.

PHOTOGRAPHERS' WORKROOM DIRECTIONS

Proceed through the Northwest Media Entrance and proceed around the main concourse to the Southeast corner above the main stadium bowl (section 140).

Option 1: Proceed down the aisle of section 140 and through ADA seating platform to the main tunnel. Proceed through the tunnel to the photographers' workroom located on the right.

Option 2: Take the elevator down to event level and proceed to the photographers' workroom.

WPS PHOTOGRAPHY

ISIPhotos.com (by International Sports Images, Inc.) is the official photography supplier of Women's Professional Soccer. ISI has created a free download site to facilitate the distribution of WPS headshots, logos, and select action photos for media use only. All images are high resolution suitable for print and web. The site is located at: <http://media.isiphotos.com>. Please contact your team media director for a site password, or email: info@isiphotos.com

For access to the full WPS image database at www.isiphotos.com, season subscription packages are available starting at \$200/month. Images can also be purchased individually using a credit card. For more information, please contact info@isiphotos.com



CAMILLE ABILY
#20 - Midfielder



GREER BARNES
#5 - Midfielder



BRITTANY BOCK
#11 - Midfielder/Forward



SHANNON BOXX
#7 - Midfielder



BRITTANY CAMERON
#6 - Goalkeeper



STEPHANIE COX
#14 - Defender/Midfielder



HAN DUAN
#9 - Forward



ALLISON FALK
#3 - Defender



KENDALL FLETCHER
#2 - Defender



JOHANNA FRISK
#21 - Defender



VAL HENDERSON
#1 - Goalkeeper



KATIE LARKIN
#10 - Forward/Midfielder



KARINA LeBLANC
#23 - Goalkeeper



MANYA MAKOSKI
#22 - Midfielder



MARTA
#19 - Forward



AYA MIYAMA
#8 - Midfielder



LISA SARI
#12 - Midfielder



ALY WAGNER
#4 - Midfielder



CHRISTIE WELSH
#13 - Forward



McCALL ZERBONI
#5 - Midfielder



ABNER ROGERS
Head Coach



HUBERT BUSBY, JR.
Assistant Coach



NEIL POWELL
Goalkeeper Coach



SEE
EXTRAORDINARY™



womensprosoccer.com